

CHRISTIE'S



MAGNIFICENT JEWELS

15 MAY 2024 | GENEVA



Lots 95 and 63 enlarged



Lot 67 enlarged



Lot 4 enlarged

MAGNIFICENT JEWELS

AUCTION

Wednesday 15 May 2024 15.00h (Lots 1-108)

under the aegis of

Maître Jean Christin, Huissier Judiciaire
At the Four Seasons Hotel des Bergues
33 Quai des Bergues, 1201 Geneva

VIEWING

Friday	10 May	10.00 - 18.00 h
Saturday	11 May	10.00 - 18.00 h
Sunday	12 May	10.00 - 18.00 h
Monday	13 May	09.00 - 18.00 h
Tuesday	14 May	09.00 - 18.00 h
Wednesday	15 May	09.00 - 13.00 h

ALSO ON VIEW

Jewels Online: The Geneva Edit
Sale number: 23041
Online auction: 8 - 22 May, 2024

AUCTIONEERS

François Curiel, Max Fawcett & Rahul Kadakia

AUCTION CODE AND NUMBER

In sending absentee bids or making enquiries, this sale should
be referred to as
KASHMIR - 25039

ABSENTEE AND TELEPHONE BIDS

Tel: +41 (0)22 319 1766

CONDITIONS OF SALE

The sale of each lot is subject to the Conditions of Sale, Important Notices and Explanation of Cataloguing Practice, which are set out in this catalogue and on christies.com. Please note that the symbols and cataloguing for some lots may change before the auction. For the most up to date sale information for a lot, please see the full lot description, which can be accessed through the sale landing page on christies.com.

BUYER'S PREMIUM

In addition to the hammer price, the successful bidder agrees to pay us a buyer's premium on the hammer price of each lot sold. On all lots we charge 26% of the hammer price up to and including CHF 900,000, 21% on that part of the hammer price over CHF 900,000 and up to and including CHF 6,000,000, and 15% of that part of the hammer price above CHF 6,000,000.

FRONT COVER
Lot 108
BACK COVER
Lot 62

CHRISTIE'S

WORLDWIDE JEWELLERY DEPARTMENT

INTERNATIONAL TEAM



FRANÇOIS CURRIEL
Chairman, Europe
fcurriel@christies.com
+33 1 40 76 84 00



RAHUL KADAKIA
International Head,
Jewellery
rkadakia@christies.com
+1 212 636 2310



VICKIE SEK
Chairman, Jewellery, Asia
vsek@christies.com
+852 297 89922



JULIEN BRUNIE
International Head,
Private sales, Jewellery
jbrunie@christies.com
+33 1 40 76 83 82



MAX FAWCETT
Head of Jewellery, Europe,
Middle East & Africa
mfawcett@christies.com
+41 22 319 17 38

AMERICAS



ALEXANDRA DAMIANOS
Associate Specialist, New York
adamianos@christies.com
+1 212 636 2308



JACQUELINE DISANTE
Head of Sale, New York
jdisante@christies.com
+1 212 636 2313



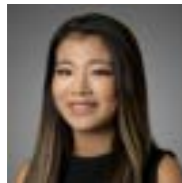
LAUREN FRIEDLANDER
Junior Specialist, New York
lfriedlander@christies.com
+1 212 636 2318



LISA HUBBARD
Senior Advisor, Los Angeles
lhubbard@christies.com
+1 310 385 2624



KELSEY KALAW
Associate Specialist,
New York
kkalaw@christies.com
+1 212 636 2319



JIMIN KIM
Junior Specialist, New York
jkim@christies.com
+1 212 636 2307



CLAIBOURNE POINDEXTER
Senior Specialist,
New York
cpoindexter@christies.com
+1 212 636 2316



ELEANOR WALPER
Specialist, Los Angeles
ewalper@christies.com
+1 310 385 2665



AMANDA MILLER
Junior Specialist, New York
amiller@christies.com
+1 212 636 2317

ASIA



KAREN AU YEUNG
Senior International
Specialist, Hong Kong
kau-yeung@christies.com
+852 2978 9921



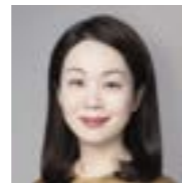
NICOLA CHAN
Junior Specialist,
Hong Kong
nchan@christies.com
+852 2978 9928



RONNY HSU
Head of Sale, Hong Kong
rhu@christies.com
+852 2978 6979



DOMINIQUE LAU
Junior Specialist,
Hong Kong
ldominique@christies.com
+852 2978 5375



CAROLINE LIANG
Senior Specialist, Shanghai
cliang@christies.com
+86 212 226 1520



BELINDA YUEN
Associate Specialist,
Hong Kong
byuen@christies.com
+858 2978 6718

EUROPE, MIDDLE EAST, RUSSIA AND INDIA



HENRY BAILEY
Head of Department,
London
hbailey@christies.com
+44 20 7389 2382



ANGELA BERDEN
Senior Specialist, Geneva
aberden@christies.com
+41 22 319 17 82



LUKAS BIEHLER
Senior Specialist, Geneva
lbiehler@christies.com
+41 22 319 17 47



LEO CRIACO
Head of Department,
Milan
lcriaco@christies.com
+39 02 303 28 335



VIOLAINE D'ASTORG
Head of Department, Paris
vdastorg@christies.com
+33 1 40 76 85 81



MEI Y GIAM
Private Sales Director,
London
mgiam@christies.com
+44 20 7389 5104



ALTHÉA HANSHAW
Specialist, Geneva
ahanshaw@christies.com
+41 22 319 17 64



ARABELLA HISCOX
Specialist, London
ahiscox@christies.com
+44 20 7752 5208



JESSICA KOERS
Head of Department,
Amsterdam
jkoers@christies.com
+31 20 575 5915



BAOMING LI
Associate Specialist, Paris
baomingli@christies.com
+33 1 40 76 72 59



MICHAELA SUHL
Associate Specialist,
London
msuhl@christies.com
+44 20 7389 2860



AGNESE FABBIANI
Cataloguer/Luxury Liaison,
Milan
afabbiani@christies.com
+39 02 303 28 372



EMILIE GRIMONPREZ
Cataloguer, Paris
egrimonprez@christies.com
+33 1 40 76 7217



VITTORIA LANZA
Cataloguer, Geneva
vlanza@christies.com
+41 22 319 17 68



MÉLANIE MATTHES
Cataloguer, Geneva
mmatthes@christies.com
+41 22 319 17 94

SERVICES FOR THIS AUCTION

GLOBAL MANAGING DIRECTOR

Emmanuel Danan
Tel: +33 (0)1 40 76 83 50

REGIONAL MANAGING DIRECTOR

Kimberly Miller
Tel: +1 212 636 2306

HEAD OF SALE MANAGEMENT

Sanda Nyun Han
Tel: +41 (0)22 319 1733

SALE COORDINATORS

Sanda Nyun Han
Amélie Villame
Tel: +41 (0)22 319 1703

BUSINESS COORDINATOR

Estelle Fanara
Tel: +41 (0)22 319 17 35

CATALOGUERS

Vittoria Lanza
Tel: +41 (0)22 319 1768
Mélanie Matthes
Tel: +41 (0)22 319 1794

SERVICES

PRE-SALE SERVICES

Client Service Team
Sale Registrations, Sale Tickets, and General
Information
Tel: +41 (0) 22 319 17 66
Email: infoswitzerland@christies.com

POST-SALE SERVICES

Daniel Chau
Post Sale Lead
Payment, Shipping, and Collection
Tel: +41 (0)22 319 1780
Email: PostSaleSwiss@christies.com

PRIVATE VIEWING

Appointments may be made for private viewing
through any of our offices or agents, but the
auctioneers reserve the right to demand satisfactory
identification and to refuse admittance. In Geneva,
appointments may be made by telephoning Estelle
Fanara on
Tel: + 41 (0) 22 319 1735.

ABSENTEE AND TELEPHONE BIDS

Tel: +41 (0)22 319 1766
Email: bidsgeneva@christies.com

AUCTION RESULTS

Tel: +41 (0)22 319 1766
christies.com

EMAIL

For general enquiries about this
auction, emails should be addressed
to the Sale Coordinator(s).

christies.com



JEWELS ONLINE: THE GENEVA EDIT

8th - 22nd May 2024



**BULGARI MID-20TH CENTURY
DIAMOND AND ENAMEL
'GIARDINETTO' BROOCH**

CHF 15,000-25,000



**GÉRARD DIAMOND
EARRINGS**

CHF 10,000-15,000



**MARINA B MULTI-GEM
'TOUPIÉS' EARRINGS**

CHF 10,000-15,000



**GEORGES FOUQUET ART
NOUVEAU MULTI-GEM
BROOCH**

CHF 20,000-30,000



**STERLÉ
MID-20TH CENTURY
DIAMOND BANGLE**

CHF 30,000-50,000



DIAMOND RING

CHF 45,000-65,000



**CARTIER MULTI-GEM
'PANTHÈRE' RING**

CHF 40,000-60,000



**MID-20TH CENTURY RUBY
AND DIAMOND RING**

CHF 30,000-50,000



MAGNIFICENT JEWELS

LOT 1 - 108



+1
**VAN CLEEF & ARPELS EMERALD AND DIAMOND
BROOCH**

Pear-shaped and round emeralds, pear, marquise-shaped and calibré-cut diamonds, 18k white gold and platinum (French marks), signed Van Cleef & Arpels, maker's mark, numbered

Size/Dimensions: 4.7 x 5.0 cm
Gross weight: 21.0 grams
CHF60,000-80,000



+2
VILLA DIAMOND AND EMERALD EARRINGS

Square emerald-cut diamonds of 5.03 and 5.02 carats, round diamonds, cabochon emeralds, 18k white gold, signed Villa

GIA, 1998, report no. 10349132: 5.03 carats, G colour, VS2 clarity, strong blue fluorescence
GIA, 1998, report no. 10349137: 5.02 carats, F colour, VS1 clarity, very strong blue fluorescence

Size/Dimensions: 1.7 cm high
Gross weight: 10.8 grams
CHF100,000-150,000

Please note that these reports are over five years old and may require updates.



+3
**VAN CLEEF & ARPELS SAPPHIRE AND DIAMOND
BRACELET**

Rectangular-shaped sapphires, round and marquise-shaped diamonds, 18k gold and platinum (French marks), signed V.C.A, maker's mark, numbered

Size/Dimensions: 17.5 cm long
Gross weight: 70.1 grams
CHF60,000-80,000

JEWELLER OF THE ITALIAN ROYAL FAMILY

The history of Illario started in 1920 when three brothers Carlo, Vincenzo and Luigi opened their first jewellery atelier in Valenza, the heart of Italy's Jewellery industry.

Many of the big houses including Bulgari, Tiffany & Co., Faraone and Fasano appointed the Illario atelier for their manufacturing.

Towards the 1950s, Bulgari started to commission Illario for their famous 'Serpenti' watch-bracelets, whilst they also made jewels for the Italian Royal Family.

The atelier participated in international jewellery fairs such as the Parisian exhibition 'Bijoux Italiens' in 1962. Later, in 1982 and 1986, Illario won the 'De Beers Diamonds International Awards' bringing their creations and Valenza's *savoir-faire* to the world.

Lot 4, enriched by two Kashmir sapphires surrounded by marquise-shaped diamonds forming a crescent shape, shows the high quality of the workshop's with exceptional gemstones.



4

ILLARIO MID-20TH CENTURY SAPPHIRE AND DIAMOND EARRINGS

Cushion-shaped sapphires of 4.31 and 4.06 carats, marquise-shaped diamonds, 1960s, 14k white gold, maker's mark (Carlo Illario e Fratelli)

SSEF, 2024, report no. 136575: 4.31 and 4.06 carats, Kashmir, no indications of heating, 4.31 carats Royal Blue

Size/Dimensions: 2.7 cm high
Gross weight: 16.9 grams
CHF100,000-150,000



(two views)

5

COLOURED DIAMOND AND DIAMOND RING

Fancy vivid yellow cushion mixed-cut diamond of 9.55 carats, baguette-cut diamonds, platinum, circa 1930

GIA, 2024, report no. 1236228552: 9.55 carats, Fancy Vivid Yellow, natural colour, VS1 clarity

Size/Dimensions: EU ring size 53 / US ring size 6½
Gross weight: 7.2 grams
CHF200,000-300,000



6

CHAUMET MID-20TH CENTURY DIAMOND NECKLACE

Round and baguette-cut diamonds, platinum and 18k white gold, circa 1960, red fitted Chaumet case

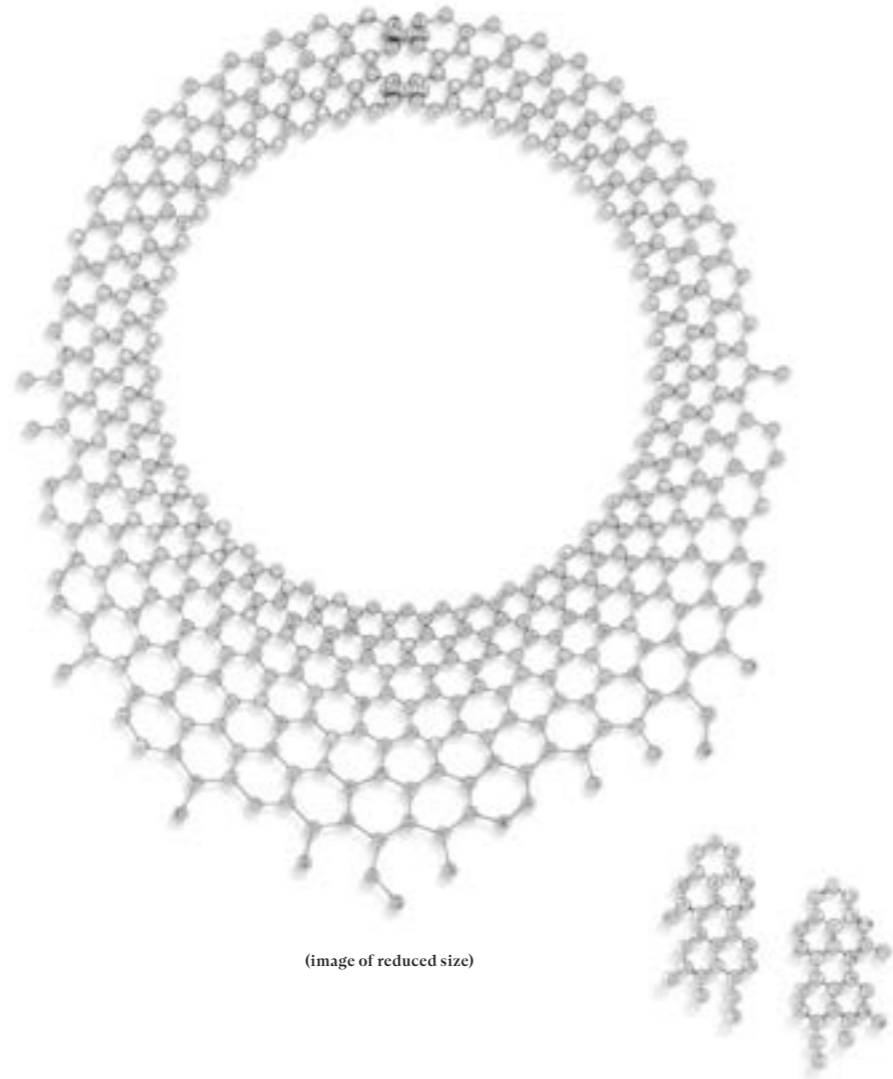
Copy of Chaumet, 1961: Estimation d'Assurance

Size/Dimensions: approximately 40.0 cm inner circumference
Gross weight: 80.8 grams
CHF60,000-80,000

PROVENANCE:

Christie's, Geneva, November 1997, sale number 1240, lot 462





(image of reduced size)

DIAMOND MESH

During the exhibition *'Cartier and Islamic Art: in Search of Modernity'*, at the Musée des Arts Décoratifs, in Paris, in 2021-22, a similar design was displayed. The necklace was a central element of the exhibition due to the mesmerizing interactive display portraying its movement and extreme flexibility, attesting to Cartier's masterfull craftsmanship and design.



+7

CARTIER SET OF DIAMOND 'PERLE DIAMANT' JEWELLERY

Comprising a necklace and a pair of earrings
Round diamonds, 18k white gold (French marks), signed Cartier, maker's mark (Pierre Brun), numbered, necklace with red Cartier case

Size/Dimensions: necklace inner circumference 42.5 cm; earrings 4.7 cm long
Gross weight: 198.0 grams

CHF60,000-80,000

EXHIBITED:

Cf. *Cartier et les Arts de l'Islam aux Sources de la Modernité*, Musée des Arts Décoratifs, Paris, October 2021 - February 2022

LITERATURE:

Cf. *Cartier et les Arts de l'Islam aux Sources de la Modernité*, Les Arts Décoratifs, Paris, 2021, p. 288 for the same necklace model

THE LOTUS GEM

Seilan to Marco Polo, *Ceilao* to the Portuguese, *Zeilan* to the Dutch and finally *Ceylon* to the British, the Island of Sri Lanka off the southern tip of India has supplied the world with fine sapphires and rubies for over 2000 years. In fact, Sri Lanka was most probably the original source of these gems, producing almost all varieties including the padparadscha for which it is one of the world's premier localities.

From the Sinhalese *padma* meaning lotus and *raga* meaning colour, the word padparadscha literally translates into colour of the lotus flower, which in Sri Lanka, is known to display this unique combination of a pink and orange colour.

+8

UNMOUNTED PADPARADSCHA SAPPHIRE

Oval-shaped padparadscha sapphire of 13.17 carats

SSEF, 2023, report no. 135099: orangy pink sapphire of 13.178 carats, Padparadscha, Ceylon (Sri Lanka), no indications of heating, colour considered stable with Appendix letter mentioning the exceptional qualities of this padparadscha sapphire

Size/Dimensions: 15.95 x 10.83 x 8.49 mm
Gross weight: 2.7 grams

CHF60,000-80,000



(two views)

+9

DIAMOND RING

Modified marquise brilliant-cut diamond of 9.42 carats, platinum

GIA, 2024, report no. 2235188291: 9.42 carats, D colour, VVS1 clarity, potentially Internally Flawless, Type IIa

Size/Dimensions: EU ring size 52 / US ring size 6
Gross weight: 5.1 grams

CHF250,000-350,000



(two views)



BOIVIN'S MENAGERIE

The period between 1935 and 1945 was marked by the overflowing creativity of Juliette Moutard, who designed a multitude of charms, often in the form of animals and sometimes adorned with precious stones. These necklaces with removable chains, like the elephant offered at auction, can be appreciated not only as jewellery but

also as trinkets to be displayed in a showcase, bearing witness to the era and the exquisite art that inspired them.

This present jewel embodies the strength, power, longevity, and wisdom associated with the elephant, a revered animal in many cultures. With its imposing size and evident intelligence, it is often

perceived as a sacred being, carrying numerous spiritual values.

Moreover, it is considered a symbol of luck and prosperity, bestowing blessings upon its possessor. Thus, this elephant pendant stands as a talisman of good fortune for the fortunate wearer.

Like the Roman god Janus, this jewel presents two distinct faces.

One, richly adorned, is suitable for elegant wear on special occasions, accentuating an evening gown. The other, more understated face, is ideal for daily use, fitting perfectly with daytime attire. With each movement of the person wearing it, the delicate pendants of the pendant, adorning the sacred animal's parade garments, come to life, captivating the gaze and revealing a perfect harmony between aesthetic splendor and the profound symbolism of the elephant.

René Boivin was passionate about nature and drew his inspiration from the animal world.

Most of the brand's iconic pieces were designed in the 1930s and 1940s and produced until the early

1990s under the direction of four women: René's widow (and sister of the famous couturier Paul Poiret) Jeanne Boivin, Suzanne Belperron, Juliette Moutard and finally René's daughter, Germaine Boivin.

The Boivin menagerie is composed of many species of the animal kingdom, such as the elephant (lot 10), symbol of power and wisdom, and the lion (lot 11), king of the jungle.





(reverse of lot 10)



+10

RARE RENÉ BOIVIN 'ELEPHANT' MULTI-GEM NECKLACE

Old-cut diamond, cabochon emerald, round rubies and sapphires, round and baguette-cut diamonds, 18k yellow gold and silver (French marks), the elephant is reversible and may be worn both sides, circa 1976 pendant signed R. Boivin

René Boivin Joaillier, 2024: Certificate of Authenticity no. 202403PXE, original piece manufactured by René Boivin in November 1976 after a drawing by Juliette Moutard

Size/Dimensions: chain 76.0 cm long; elephant 6.0 x 4.5 x 3.2 cm

Gross weight: 104.7 grams

CHF120,000-180,000

PROVENANCE:

By family tradition, the main old-cut diamond comes from a Herz-Belperron ring and was later mounted on the elephant by the Maison René Boivin.

LITERATURE:

Cf. F. Cailles, *René Boivin, Joaillier*, Les Éditions de l'Amateur, Paris, 1994, p. 305, 306 and 356 for similar necklaces



11

RARE RENÉ BOIVIN MULTI-GEM 'LION COUCHÉ' SHOULDER BROOCH

Round yellow, orange and brown diamonds, marquise-shaped sapphires and emeralds, round diamonds, 18k yellow gold (French marks), circa 1985, articulated body, signed R. Boivin, maker's mark (partially indistinct)

René Boivin Joaillier, 2024: Certificate of Authenticity no. 202403PXD, original piece manufactured by René Boivin circa 1985 after a drawing by Jacques Bernard

Size/Dimensions: 9.3 x 4.2 cm

Gross weight: 100.8 grams

CHF200,000-400,000

PROVENANCE:

From the Aga Khan Family

LITERATURE:

Cf. F. Cailles, *René Boivin, Joaillier*, Les Éditions de l'Amateur, Paris, 1994, p. 309

Please note that the coloured diamonds have not been tested for natural colour.



(two views)

+12

SAPPHIRE AND DIAMOND RING

Oval-shaped sapphire of 21.01 carats, round diamonds, platinum (French mark) and yellow gold

SSEF, 2023, report no. 129939: 21.014 carats, Burma (Myanmar), no indications of heating

Size/Dimensions: EU ring size 55 / US ring size 7¼

Gross weight: 13.1 grams

CHF50,000-80,000



+13

RUBY AND DIAMOND RING

Oval-shaped ruby of 7.70 carats, triangular-shaped diamonds, 18k yellow gold

SSEF, 2023, report no. 133773: 7.699 carats, Burma (Myanmar), no indications of heating

Gübelin, 2023, report no. 23060106: Burma (Myanmar), no indications of heating, with Information Sheets on Unheated Rubies and Rubies from Mogok, Burma

Size/Dimensions: EU Ring size 53 / US ring size 6¼

Gross weight: 6.4 grams

CHF60,000-80,000



(two views)

+14

SAPPHIRE AND DIAMOND RING

Cushion-shaped sapphire of 10.16 carats, heart-shaped and round diamonds, platinum and 18k yellow gold

SSEF, 2024, report no. 133775: 10.166 carats, Burma (Myanmar), no indications of heating

Size/Dimensions: EU ring size 55 / US ring size 7¼

Gross weight: 9.8 grams

CHF70,000-100,000



(two views)



+15

VAN CLEEF & ARPELS SUITE OF MULTI-GEM JEWELLERY WITH AN ASSOCIATED RING

Comprising a bracelet, a pair of earrings, a brooch and a ring

Oval-shaped cabochon and round rubies, sapphires and emeralds, round diamonds, bracelet mounted in 18k yellow gold and platinum (French marks), earrings, brooch and ring mounted in 18k gold, circa 1965, earrings with detachable pendants, bracelet signed Van Cleef & Arpels, maker's marks (Péry & Fils), earrings signed Van Cleef & Arpels, brooch signed V.C.A., earrings and brooch numbered, ring unsigned

Size/Dimensions: bracelet 18.5 cm long; earrings 6.8 cm high; brooch 5.1 cm high; EU ring size 51 / US ring size 5¾

Gross weight: 183.1 grams

CHF80,000-120,000



(two views)

+16

BOUCHERON RETRO SAPPHIRE AND DIAMOND RING

Sugarloaf sapphire of 16.44 carats, old-cut diamonds, 18k yellow gold and platinum (French marks), circa 1940, signed Boucheron, Paris

SSEF, 2024, report no. 137241: declared weight of 16.44 carats, Kashmir, no indications of heating

AGL, 2017, report no. 1088453: 16.44 carats, Kashmir, no gemological evidence of heating, no clarity enhancement

Size/Dimensions: EU ring size 49 / US ring size 5

Gross weight: 12.4 grams

CHF180,000-220,000

Please note that the AGL report is over five years old and may require an update.



(two views)

+17

VERDURA DIAMOND 'X' RING

Old-cut diamond of 9.16 carats, round diamonds, 18k yellow gold and platinum, 1970s, signed Verdura

Size/Dimensions: EU ring size 52 / US ring size 6

Gross weight: 22.7 grams

CHF65,000-85,000

LITERATURE:

Cf. *Verdura, Catalogue*, New York, 1990, p. 5 for the same model



(image of reduced size)

+18

NATURAL PEARL AND DIAMOND NECKLACE

Two strands of graduated natural pearls ranging approximately from 8.30 to 4.23 mm, baguette-cut diamonds

SSEF, 2024, report no. 137645: 164 natural pearls, saltwater

GIA, 2023, report no. 2231087621: 164 natural pearls, saltwater, *Pinctada* species, no indications of treatment, with an additional letter attesting to the striking quality of these 164 well-matching pearls

Size/Dimensions: 46.5 cm shortest strand

Gross weight: 42.8 grams

CHF60,000-80,000



+19
VAN CLEEF & ARPELS SAPPHIRE AND DIAMOND NECKLACE

Oval and cushion-shaped sapphires, round and baguette-cut diamonds, 18k and 14k yellow gold, signed Van Cleef & Arpels, New York, numbered, green Van Cleef & Arpels pouch

SSEF, 2023, report no. 130871: 18 sapphires, majority of the gemstones Ceylon (Sri Lanka), 6 sapphires with no indications of heating, the remaining with indications of heating

Size/Dimensions: 43.0 cm long
 Gross weight: 75.0 grams
 CHF60,000-80,000



+20
VAN CLEEF & ARPELS SAPPHIRE AND DIAMOND EARRINGS

Oval-shaped sapphires, round and baguette-cut diamonds, 18k yellow gold, signed Van Cleef & Arpels, New York, numbered, green Van Cleef & Arpels pouch

SSEF, 2023, report no. 130872: 2 sapphires, Ceylon (Sri Lanka), indications of heating

Size/Dimensions: 2.2 cm high
 Gross weight: 20.2 grams
 CHF20,000-30,000



(image of reduced size)



+21
VAN CLEEF & ARPELS GROUP OF MULTI-GEM JEWELLERY

Comprising a necklace, a bracelet, a pair of earrings and a 'Philippine' ring
 Necklace with pear-shaped cabochon chrysoprase, round diamonds; bracelet with chrysoprase beads, round diamonds; earrings with chrysoprase beads, oval and pear-shaped yellow sapphires, single-cut diamonds; ring with chrysoprase plaques, round diamonds, all mounted in 18k yellow gold (French marks), excluding bracelet in platinum and 18k yellow gold (French marks), 1970s, necklace and earrings signed Van Cleef & Arpels, bracelet and ring signed VCA, maker's marks (Péry & Fils to the necklace and ring, Van Cleef & Arpels to the bracelet and earrings), numbered

Size/Dimensions: necklace 36.0 cm long; bracelet 19.5 cm long; earrings 7.6 cm high; EU ring size 53 / US ring size 6½
 Gross weight: 146.9 grams
 CHF90,000-150,000



(image of reduced size)



+22

**VAN CLEEF & ARPELS SUITE OF TURQUOISE AND DIAMOND
'LIBERTÉ' JEWELLERY**

Comprising a necklace, a pair of earrings and a tiara
 Pear and cushion-shaped cabochon turquoises, round diamonds, 18k yellow gold (French marks), the pendent drops to the necklace may be detached to form pendent earrings and a tiara, 1960s, necklace and earrings signed Van Cleef & Arpels, tiara signed V.C.A, each with maker's mark and numbered, light grey fitted Van Cleef & Arpels cases

Size/Dimensions: necklace 37.1 cm long; earrings 4.8 cm high, detachable earring pendants 2.5 cm high;
 tiara inner circumference 35.0 cm, 5.5 cm high
 Gross weight: 250.8 grams
 CHF220,000-320,000

EXHIBITED:
 London, Sotheby's, *Power & Image: Royal & Aristocratic Tiaras*, 28 May - 28 June 2022.



In the 1960s, fashion became more daring, music grew louder, and jewellery took on a bolder, brighter aesthetic. As highlighted by lot 22, the 1960s brought vibrant colours, using opaque and luminous materials such as turquoise and coral, often contrasted with yellow gold.

This Van Cleef & Arpels parure epitomizes this trend beautifully, showcasing brightly hued turquoise cabochons and palm-shaped motifs adorned with sparkling white brilliant-cut diamonds.

NO RESERVE



(two views)



(two views)



+23

COLOURED SAPPHIRE RING

Cushion-shaped modified mixed-cut yellow sapphire of 50.90 carats, 18k yellow gold (Swiss mark)

Gübelin, 2021, report no. 21062064: 50.90 carats, origin not specified, no indications of heating

Size/Dimensions: EU ring size 52½ / US ring size 6¼

Gross weight: 18.8 grams

CHF50,000-70,000



+24

SAPPHIRE AND DIAMOND RING

Cushion-shaped sapphire of 52.88 carats, round diamonds, 18k white gold

SSEF, 2024, report no. 135285: 52.885 carats, Burma (Myanmar), no indications of heating, with Appendix Letter attesting to the rare and exceptional qualities of the sapphire

Gübelin, 2023, report no. 23102125: 52.88 carats, Burma (Myanmar), no indications of heating, with Appendix on exceptional qualities of the sapphire and Information Sheet on Unheated Sapphires

Size/Dimensions: EU ring size 53 / US ring size 6½

Gross weight: 21.3 grams

CHF150,000-250,000



(image of reduced size)



+25

MICHELE DELLA VALLE MULTI-GEM NECKLACE

Round pink and purple spinels, round pink sapphires, cabochons rubies, round brown diamonds and diamonds, 18k white gold, signed Michele della Valle, maker's mark, numbered, black Michele della Valle case

Size/Dimensions: inner circumference approximately 40.6 cm

Gross weight: 173.6 grams

CHF40,000-60,000

Please note that the brown diamonds have not been tested for natural colour.



+26

EMERALD, DIAMOND AND ONYX PENDANT

Square, rectangular and pear-shaped emeralds, old, rose-cut and oval-shaped diamonds, buff-top and cabochon onyx, platinum and 18k yellow gold (French marks), circa 1930 and later, emeralds and oval-shaped diamond of later addition, numbered, associated red Cartier case

Size/Dimensions: 12.6 x 4.5 cm

Gross weight: 47.1 grams

CHF60,000-80,000



(image of reduced size)

+27

CARTIER PAIR OF ART DECO DIAMOND, EMERALD AND ONYX BRACELETS

Cushion-shaped, old, rose-cut diamonds, cabochon emeralds, buff-top and round-shaped cabochon onyx, platinum (French marks), may be joined together to form a short necklace, circa 1925, each signed Paris Cartier Londres, maker's mark (Gustave Renault, partially indistinct), numbered

Size/Dimensions: bracelets each 18.0 cm long

Gross weight: 42.2 grams

CHF45,000-65,000



(image of reduced size)

+28

CARTIER ART DECO EMERALD, DIAMOND, ONYX AND ENAMEL BANDEAU - BRACELET

Cushion-shaped emerald, cushion-shaped, old and rose-cut diamonds, buff-top onyx, black enamel, platinum (French marks), circa 1930 and later, signed Cartier, Paris, Londres, numbered, central emerald panel of possible later addition, with original black silk ribbon and gold buckle clasp, now detached, gold (French mark), signed Cartier, maker's mark, with identical number, associated red Cartier case

Size/Dimensions: 15.0 cm long

Gross weight: 45.4 grams

CHF35,000-55,000





(three views)



•+29

DIAMOND RING

Oval brilliant-cut diamond of 12.76 carats, round diamonds, platinum

GIA, 2023, report no. 5234054655: 12.76 carats, D colour, VS2 clarity

Size/Dimensions: EU ring size 52½ / US ring size 6¼

Gross weight: 8.7 grams

CHF300,000-500,000





+50

RARE BOUCHERON SUITE OF DIAMOND, EMERALD AND COLOURED DIAMOND 'BOTANE' JEWELLERY

Comprising a brooch, a pair of earrings and a ring
Cushion-shaped diamond, round diamonds, emeralds, yellow and pink diamonds, 18k white and blackened gold (French marks earrings and ring), signed Boucheron, maker's marks (on earrings and ring), numbered (brooch and ring), four white Boucheron pouches

Size/Dimensions: brooch 10.6 cm high; earrings 6.2 and 5.5 cm high; EU ring size 52 / US ring size 5¾
Gross weight: 211.7 grams
CHF200,000-270,000

Please note that the coloured diamonds have not been tested for natural colour.

PARAÍBA

Well known for its richness in colour due to the presence of copper and manganese, with hues ranging from vivid neon blue to green copper, Paraiba is amongst the most sought-after tourmalines.

Named after its discovery in the 1980s in Mina da Batalha nearby the village Sao Jose de Batalha in Paraiba, Brazil, this gemstone has been subsequently found in African sources, such as Nigeria and Mozambique.



+31

KAT FLORENCE PARAÍBA TOURMALINE AND DIAMOND NECKLACE

Pear-shaped Paraiba tourmaline of 41.32 carats, round diamonds, 18k white gold, signed Kat Florence, black Kat Florence case and box

Kat Florence: Certificate of Authenticity
Accompanied by original drawing

Please refer to the Jewellery department for the SSEF gemmological report.

Size/Dimensions: 56.0 cm maximum length; pendant 4.5 cm high
Gross weight: 44.2 grams
CHF100,000-150,000

30.02 CARATS
INTERNALLY FLAWLESS



+52

DIAMOND PENDANT

Pear brilliant-cut diamond of 30.02 carats, platinum

GIA, 2022, report no. 5101473256: 30.02 carats, D colour, Internally Flawless, Type IIa

Size/Dimensions: 3.0 cm high

Gross weight: 11.1 grams

CHF1,600,000-2,600,000





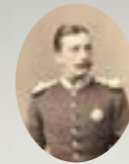
QUEEN VICTORIA EUGENIA'S EMERALDS



Franz August Karl Albert Emanuel
Prince of Saxe-Coburg and Gotha
(1819 - 1861)



Alexandrina Victoria
Queen of the United Kingdom of Great
Britain and Ireland, Empress of India
(1819 - 1901)



Henry
Prince of Battenberg
(1858 - 1896)



Beatrice Mary Victoria Feodore
Princess of the United Kingdom
(1857 - 1944)



Victoria Eugenia of Battenberg
Queen of Spain
(1887 - 1969)



Alfonso XIII
King of Spain
(1886 - 1941)



Juan Carlos Teresa Silverio Alfonso de
Borbón y Battenberg
Count of Barcelona
(1913 - 1993)



María de las Mercedes de Borbón y
Orléans
Countess of Barcelona
(1910 - 2000)



Juan Carlos I
King of Spain
(1938 -)

From left to right
Portrait of Prince Albert, commissioned by Queen Victoria, 1860, Royal Collection Trust; Portrait of Queen Victoria, 1882, National Portrait Gallery; Portrait of Prince Henry of Battenberg, circa 1885; Portrait of Beatrice by Walery, 1886, Royal Collection; Portrait of Queen Victoria Eugenia by Kaulak, 1910; Portrait of King Alfonso XIII of Spain by Kaulak, 1916, National Museum of Catalonia.



+53

EARLY 20TH CENTURY EMERALD AND DIAMOND PENDENT BROOCH

Sugarloaf and oval-shaped cabochon emeralds, old, rose, and calibr -cut diamonds, platinum, single pin detachable of later addition, circa 1915

Please refer to the Jewellery department for the SSEF gemmological report.

Size/Dimensions: 8.5 x 4.1 cm

Gross weight: 37.3 grams

CHF150,000-200,000

PROVENANCE:

Victoria Eugenia of Battenberg, Queen of Spain (1887 - 1969)



QUEEN VICTORIA EUGENIA

Queen Victoria Eugenia of Spain (1887-1969) reigned alongside King Alfonso XIII from May 1906 to April 1931.

Born in Scotland at Balmoral Castle, daughter of Prince Henry of Battenberg and Princess Beatrice, fifth daughter of Queen Victoria. She was very close to her maternal grandmother and often commented that Queen Victoria was like a second mother to her and her siblings.

After the wedding with Alfonso XIII, she moved to Spain where at first, she found some difficulties adapting to the new culture. She however integrated more and more and dedicated her time to working in hospitals and charities, such as the Spanish Red Cross.

Victoria Eugenia of Battenberg
by Bernhard  sterman, 1924, Museo del Prado, Madrid



+34

EMERALD AND DIAMOND PENDANT-BROOCH

Oval and drop-shaped cabochon emeralds, old and rose-cut diamonds, white gold, pendant detachable, both parts with possible later alterations

SSEF, 2024, report no. 137048 (oval-shaped cabochon): Colombia, moderate amount of oil in fissures

Size/Dimensions: 7.4 cm high; pendant 4.9 cm high

Gross weight: 23.2 grams

CHF40,000-60,000



(two views)

+35

CARTIER ART DECO TWIN-STONE DIAMOND RING

Old-cut diamonds of 6.33 and 6.13 carats, baguette-cut, triangle and fancy-shaped diamonds, platinum (French mark), signed Cartier, circa 1930

Size/Dimensions: EU ring size 54 / US ring size 7

Gross weight: 12.6 grams

CHF100,000-150,000

PROVENANCE:

Christie's, Geneva, November 1998, sale number 1254, lot 330



+36

CARTIER ART DECO EMERALD AND DIAMOND BRACELET

Rectangular-shaped emeralds, diamonds of various shapes, platinum (French marks), 1930s, signed Cartier (partially indistinct), maker's mark (Gustave Renault)

Size/Dimensions: 18.2 cm long

Gross weight: 61.5 grams

CHF55,000-75,000





+37

NATURAL PEARL AND DIAMOND EARRINGS

Drop-shaped natural pearls, round, old and rose-cut diamonds, platinum, silver and yellow gold partially blackened, pendants detachable with and without the pearls, composite

SSEF, 2024, report no. 137244: two natural pearls, saltwater

Size/Dimensions: 5.3 cm high

Gross weight: 23.2 grams

CHF65,000-85,000



38

VAN CLEEF & ARPELS ART DECO EMERALD AND DIAMOND BRACELET

Octagonal-shaped emerald of 10.00 carats, old and single-cut diamonds, platinum (French marks) and yellow gold, 1920s, signed Van Cleef & Arpels, Paris, numbered, emerald setting of later addition

SSEF, 2022, report no. 123186: 10.003 carats, Colombia, minor amount of oil in fissures

Size/Dimensions: 18.0 cm long

Gross weight: 79.9 grams

CHF120,000-180,000



+39

TABBAH RUBY AND DIAMOND RING

Oval-shaped ruby of 7.06 carats, round, baguette-cut and triangular-shaped diamonds, 18k yellow gold (French mark), signed Tabbah, maker's mark (Cauet)

SSEF, 2024, report no. 135929: 7.068 carats, Burma (Myanmar), no indications of heating, minor amount of oil in fissures

Size/Dimensions: EU ring size 53½ / US ring size 6½

Gross weight: 10.4 grams

CHF110,000-170,000



(two views)

+40

VAN CLEEF & ARPELS SAPPHIRE AND DIAMOND RING

Oval-shaped sapphire of 7.00 carats, baguette-cut diamonds, 18k yellow gold (French mark), signed Van Cleef & Arpels, maker's mark (Successeurs Ehret), numbered, blue Van Cleef & Arpels case

SSEF, 2023, report no. 133133: 7.008 carats, Burma (Myanmar), no indications of heating

Gübelin, 2020, report no. 20080004: Burma (Myanmar), no indications of heating, with Information Sheet

Size/Dimensions: EU ring size 52 / US ring size 6

Gross weight: 8.5 grams

CHF50,000-70,000



(two views)

+41

BULGARI RUBY AND DIAMOND RING

Oval-shaped ruby of 6.53 carats, half moon-shaped diamonds, 18k yellow gold (Italian mark), signed Bvlgari

SSEF, 2024, report no. 137272: 6.530 carats, Burma (Myanmar), no indications of heating

Size/Dimensions: EU ring size 49 / US ring size 4¾

Gross weight: 5.6 grams

CHF100,000-150,000



(two views)



(two views)

+42

DIAMOND RING

Pear brilliant-cut diamond of 11.17 carats, 18k white gold (Swiss mark)

GIA, 2024, report no. 6233012382: 11.17 carats, D colour, VVS1 clarity, potentially Internally Flawless, Type IIa

Size/Dimensions: EU ring size 53 / US ring size 6½
Gross weight: 7.2 grams

CHF550,000-750,000



(two views)

+43

DIAMOND AND CHALCEDONY RING

Square emerald-cut diamond of 51.84 carats, fancy-shaped blue chalcidony, fancy-shaped and round diamonds, 18k white gold, maker's mark (GF & F The Haute Joaillerie)

GIA, 2024, report no. 5231198914: 51.84 carats, S to T colour range, VS2 clarity, faint fluorescence, excellent symmetry

Size/Dimensions: EU ring size 50½ / US ring size 5¼
Gross weight: 29.9 grams

CHF400,000-550,000



LOT 44 NO LOT

HEDGES & ROWS

Famed jewellery designer Jean Schlumberger was born in 1907 in the Alsace region of France. From a textile-manufacturing French family, Schlumberger started in the financial world, before jumpstarting his jewellery career in the 1930s when his designs caught the eye of Elsa Schiaparelli.

In 1956, he became Vice President for Tiffany & Co., starting his lasting design legacy with the famous brand.

This new partnership gave Schlumberger access to the firm's world-class gemstones and materials. With these resources, Schlumberger's imaginative visions, inspired by his travels to Bali, India and Thailand,

transformed into bejeweled realities. Delighted with his beautiful designs, Walter Hoving, Tiffany & Co.'s Chairman at the time, allowed Schlumberger to become the first designer in their history to sign his own name on their pieces.

His nature-inspired jewellery creations garnered admiration from an esteemed clientele and the most fashionable ladies of the time, including icons such as the Duchess of Windsor, Audrey Hepburn, Elizabeth Taylor, and Jacqueline Kennedy.

Among his greatest designs stands the 'Hedges and Rows' necklace, introduced by Tiffany & Co. in 1960.

Lot 45, adorned with yellow sapphires, turquoise and diamonds, exemplifies Schlumberger's unmatched fusion of vibrant hues and intricate design. Inspired by the pattern of garden hedges and rows, this necklace exemplifies Schlumberger's profound connection with nature, expertly transmitting its allure into breathtaking jewellery. Its rarity and exceptional craftsmanship underline his devotion to merging elegance with nature's elements, capturing the admiration of jewellery enthusiasts globally.



(image of reduced size)

45

TIFFANY & CO., JEAN SCHLUMBERGER COLOURED SAPPHIRE, TURQUOISE AND DIAMOND 'HEDGES AND ROWS' NECKLACE

Cushion-shaped yellow sapphires, cushion and rectangular-shaped yellow sapphires, cabochon turquoises, round diamonds, 1960s, 18k yellow gold and platinum, signed Tiffany, Schlumberger, black Tiffany & Co. designed by Schlumberger case

SSEF, 2024, report no. 136091: 2 yellow sapphires of 15.842 and 13.012 carats, Ceylon (Sri Lanka), no indications of heating, colour considered stable

Size/Dimensions: inner circumference approximately 36.2 cm
Gross weight: 290.0 grams
CHF250,000-400,000

LITERATURE:

Cf. S. Tennenbaum, J. Zapata, *The Jeweled Garden*, Thames & Hudson, London, 2006, p. 128
Cf. P. Proddow, D. Healy, *American Jewelry, Glamour and Tradition*, Rizzoli International Publications, Inc, New York, 1987, p. 172 for a similar model
Cf. D. Vreeland, *Bijoux de Jean Schlumberger*, Franco Maria Ricci, 1976, p. 143



“THESE GEMS HAVE LIFE IN THEM:
THEIR COLOURS SPEAK, SAY
WHAT WORDS FAIL OF”

George Elliot

EXCEPTIONAL STONES

Gemstones have captivated humanity for centuries with their exquisite beauty, rarity, and profound symbolism.

From ancient civilizations to modern times, these precious stones have been used to convey love, wealth and power. Whether adorning royal crowns or serving as talismans for protection, gemstones are instilled with layers of meaning that transcend time and place.





(three views)



+46

IMPORTANT EMERALD AND DIAMOND RING

Octagonal step-cut emerald of 15.94 carats, round emeralds and diamonds, platinum

SSEF, 2024, report no. 136442: 15.940 carats, Colombia, no indications of clarity modification in fissures

Size/Dimensions: EU ring size 52 / US ring size 6

Gross weight: 8.3 grams

CHF700,000-1,000,000



BLUE VELVET

The velvet blue colour, typical of sapphires from Kashmir, is due to minute dust particles that scatter light throughout the stone.

The below image is a photograph taken from within this exceptional sapphire, showing the typical dust bands which are responsible for the renowned velvety appearance of this coveted gemstone.



©Gübelin Gem Lab



(three views)



47

EXCEPTIONAL SAPPHIRE AND DIAMOND RING

Cushion-shaped sapphire of 11.03 carats, fancy-shaped diamonds, platinum, numbered

SSEF, 2024, report no. 137180: 11.033 carats, Kashmir, no indications of heating, with Appendix Letter stating the exceptional qualities of this sapphire
Gübelin, 2024, report no. 24030027: 11.03 carats, Kashmir, no indications of heating, with Information Sheet on Unheated sapphires

Size/Dimensions: approximate EU ring size 54 / approximate US ring size 6¾ (with sizing beads)

Gross weight: 7.0 grams

CHF750,000-1,200,000



THE ALLURE OF PINK SAPPHIRES

While sapphires have long been associated with a blue colour, nature has its ways of surprising us when it comes to the multitude of possibilities for different shades of colour. Pink sapphires, in particular, stand out for their exceptional rarity and beauty, prized possessions for both collectors and connoisseurs.



(three views)



+48

IMPORTANT COLOURED SAPPHIRE RING

Cushion-shaped pink sapphire of 25.20 carats, platinum

SSEF, 2024, report no. 137644: Ceylon (Sri Lanka), no indications of heating, with Appendix Letter

AGL, 2009, report no. CS 40739: pink sapphire of 25.20 carats, Ceylon (Sri Lanka), no gemological evidence of heat

Size/Dimensions: EU ring size 53 / US ring size 6½

Gross weight: 10.5 grams

CHF450,000-650,000

Please note that the AGL report is over five years old and may require an update.



Lot 49 enlarged



Lot 49 as a brooch



Lot 49 as a pair of earrings



+49

EXCEPTIONAL PAIR OF RUBY AND DIAMOND EARRINGS / BROOCH

Cushion-shaped rubies of 3.12 and 3.05 carats, marquise brilliant-cut diamonds of 1.67, 1.49, 1.48 and 1.47 carats, marquise-shaped diamonds, platinum and 18k white gold, additional fitting to wear as brooch

SSEF, 2024, report no. 136090: 3.127 and 3.058 carats, Burma (Myanmar), no indications of heating, the bigger ruby with minor amount of oil in fissures, the smaller ruby Pigeon Blood

GIA, 2024, report no. 7235188214: 1.67 carats, E colour, VS2 clarity, Type Ia

GIA, 2024, report no. 2231188207: 1.49 carats, D colour, VS1 clarity, Type Ia

GIA, 2024, report no. 5234188205: 1.48 carats, F colour, VS2 clarity, Type Ia

GIA, 2024, report no. 6234188202: 1.47 carats, D colour, VS1 clarity, Type Ia

Size/Dimensions: earrings 2.5 cm high; brooch 4.2 cm long

Gross weight: 15.2 grams

CHF280,000-380,000



(two views)

+50

RUBY AND DIAMOND RING

Cushion-shaped ruby of 6.05 carats, pear-shaped diamonds, platinum and 18k yellow gold (French marks)

SSEF, 2024, report no. 77387: Burma (Myanmar), no indications of heating, with Appendix Letter on the exceptional rarity of this ruby

Size/Dimensions: EU ring size 51 / US ring size 5¾

Gross weight: 9.8 grams

CHF750,000-1,100,000



(two views)

+51

DIAMOND RING MOUNTED BY CARTIER

Pear brilliant-cut diamond of 20.02 carats, round diamonds, platinum (French mark), signed MT Cartier, maker's mark (Cartier Joaillerie Internationale), numbered

GIA, 2023, report no. 1152675820: 20.02 carats, D colour, Internally Flawless, Type IIa

Cartier, 2012: Certificate of Authenticity no. 125

Size/Dimensions: EU ring size 53 / US ring size 6¾

Gross weight: 14.1 grams

CHF900,000-1,600,000





(two views)

+52

EMERALD AND DIAMOND RING

Octagonal-shaped emerald of 7.72 carats, fancy-shaped diamonds, platinum

SSEF, 2024, report no. 137243: 7.728 carats, Colombia, no indication of clarity modification in the fissures

Size/Dimensions: EU ring size 55 / US ring size 7¼
Gross weight: 11.1 grams

CHF70,000-100,000



54

BULGARI MID-20TH CENTURY EMERALD AND DIAMOND PENDANT-BROOCH

Rectangular-shaped emerald of 24.38 carats, round, marquise and pear-shaped diamonds, platinum and white gold (pin), 1950s, signed Bulgari

SSEF, 2024, report no. 136504: Colombia, moderate amount of oil in fissures

Size/Dimensions: 4.4 x 4.1 cm
Gross weight: 26.8 grams

CHF100,000-150,000

PROVENANCE:

Sotheby's, New York, October 1989, sale number 5911, lot 352

LITERATURE:

Cf. V. Meylan, *Bulgari, Les Trésors de Rome*, VM Publications, Paris, 2017, p. 230 for a similar model



(two views)

+53

DIAMOND RING

Briolette-cut diamond of 9.10 carats, 18k white gold (Swiss mark)

GIA, 2022, report no. 1142142296: 9.10 carats, D colour, Internally Flawless, excellent polish and symmetry, Type IIa

Size/Dimensions: EU ring size 52½ / US ring size 6¼
Gross weight: 1.8 grams

CHF240,000-350,000



Photo by Clive Limpkin/Express/
Hulton Archive/Getty Images

**BULGARI'S
SPLENDOUR**

During the 1950s, Bulgari's designs broke away from the Parisian fashion trend setting gemstones in mountings with soft and smooth outlines. Lot 54, resembling Gina Lollobrigida's iconic emerald and diamond brooch, reflects this shift.



55

FABERGÉ EARLY 20TH CENTURY SAPPHIRE, DIAMOND AND GOLD CIGARETTE CASE

Rectangular with rounded corners, cypher of Dowager Empress Maria Feodorovna (1847-1928), old, single and rose-cut diamonds, oval-shaped cabochon sapphires, 14k yellow gold (Kokoshnik mark for St. Petersburg), signed Fabergé in Cyrillic, maker's mark (Henrik Wigström), 1908-1917

Size/Dimensions: 10.6 x 7.2 x 1.5 cm
Gross weight: 207.9 grams
CHF20,000-30,000

PROVENANCE:
Private collection
Acquired by the current owner's family in the 1960s



(image of reduced size)

56

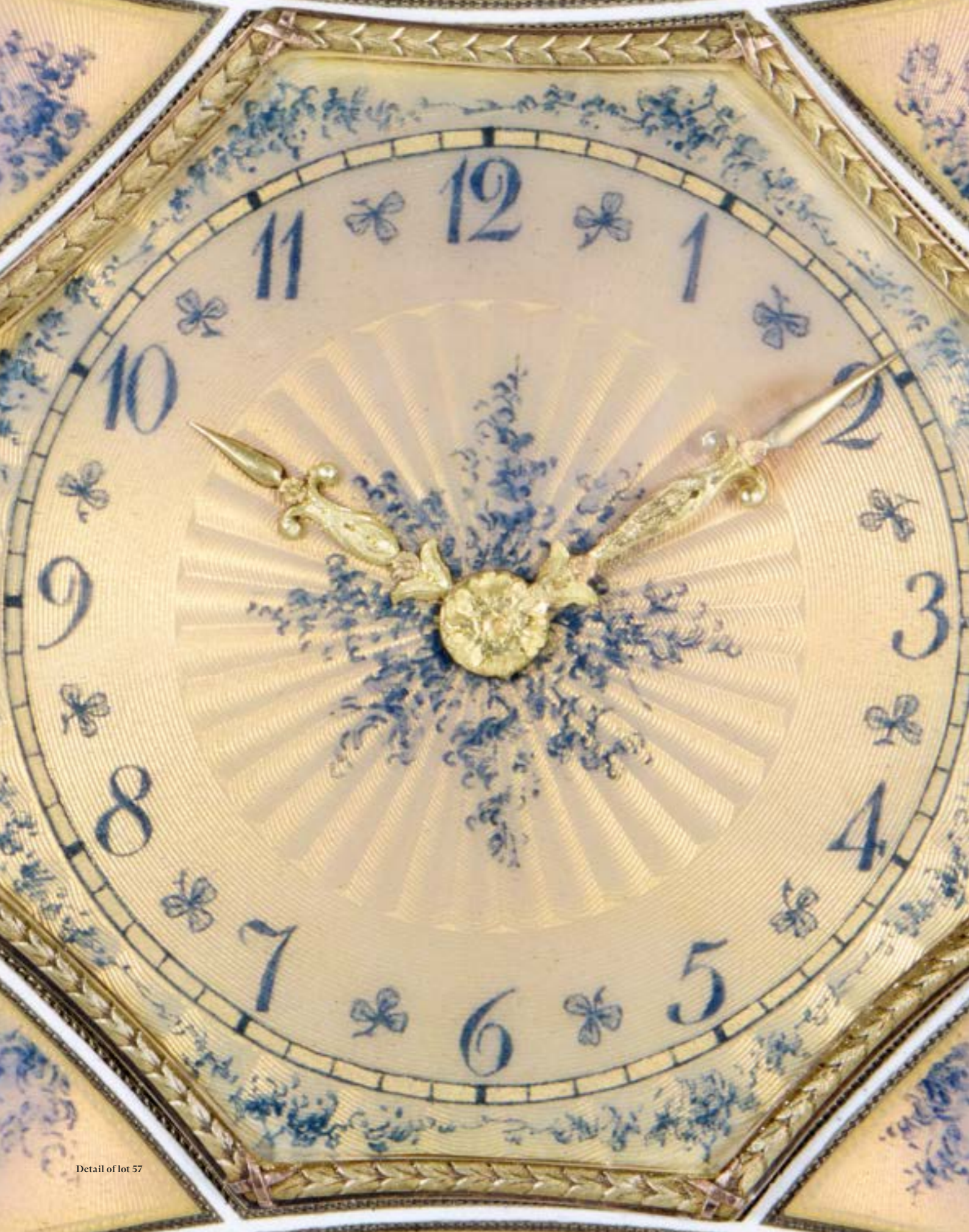
FABERGÉ LATE 19TH CENTURY ENAMEL, SEED PEARL AND SYCAMORE DESK CLOCK

Round dial with white enamel, lilac guilloché enamel, black Arabic numerals and rose gold hands, seed pearl bezel, sycamore wood oblong panel, silver-gilt (Russian mark for St Petersburg), silver-gilt folding strut, manual movement, circa 1890, signed Fabergé in Cyrillic, maker's mark (Victor Aarne), later fitted Wartski case

Size/Dimensions: case diameter 52.0 mm; 30.0 x 13.6 cm
Gross weight: 490.9 grams
CHF60,000-90,000

PROVENANCE:
Acquired at Wartski, in London, in the 1970s.
Hence by descent.





Detail of lot 57

AN IMPERIAL FABERGÉ DESK CLOCK

This richly decorated enamelled clock by Fabergé is a rare example and a wonderful discovery. According to the Imperial Cabinet ledgers, this clock was discharged by the Cabinet for the journey of the Dowager Empress Maria Feodorovna (1847-1928) to England, when she travelled for the funeral of her brother-in-law, King Edward VII, in May 1910. She stayed in England for nearly three months, spending time with her sister, now Queen Dowager Alexandra.

Ledgers indicate that in June 1910 she presented this clock to Richard Farrer Herschell, 2nd Baron Herschell

(1878-1929), who was Lord-in-Waiting to King Edward VII, 1907-1910, and King George V, 1910-1919. Lord Herschell was accompanying Maria Feodorovna in London during her stay. Impressive gifts, such as the present clock, played an important role in Imperial State Visits. When abroad, members of the Imperial family awarded a variety of gifts to foreign dignitaries as a means of creating diplomatic bonds.



Portrait of Lord Herschell
© National Portrait Gallery, London



+57

FABERGÉ EARLY 20TH CENTURY IMPERIAL PRESENTATION GOLD-MOUNTED AND GUILLOCHÉ ENAMEL SILVER-GILT DESK CLOCK

Octagonal dial with Arabic numerals and gold hands, opalescent salmon pink guilloché enamel, painted *en grisaille* with dendritic design, ribbon-tied laurel-chased gold rim, further decorated with an eight-point star similarly guilloché enamelled, within opaque white enamel borders, on an opalescent white guilloché enamel ground, acanthus-chased gold outer border, silver-gilt scroll strut and back-plate (Kokoshnik mark for St Petersburg), with an ivory back, manual movement, signed Fabergé in Cyrillic, maker's mark (Henrik Wigström), 1908-1917, scratched inventory numbers 18597 and 25235, original fitted Fabergé wooden case

Size/Dimensions: case 52.9 mm; clock diameter 12.5 cm

Gross weight: 444.5 grams

CHF120,000-180,000

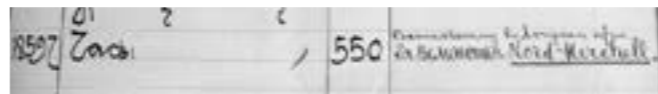
PROVENANCE:

Supplied by Fabergé to the Imperial Cabinet at a cost of 550 roubles under the number 18597.

Discharged by the Imperial Cabinet for the journey of the Dowager Empress Maria Feodorovna (1847-1928) to England in 1910.

Presented by Dowager Empress Maria Feodorovna to Richard Farrer Herschell, 2nd Baron Herschell (1878-1929) in June 1910.

We are grateful to Dr Dmitry Krivoshei for his assistance with the research of the present lot.



A record from the Imperial Cabinet ledgers for the present lot





+58

CARTIER ART DECO RUBY AND DIAMOND BROOCH

Cushion-shaped ruby, old-cut diamonds, platinum, 1930s, signed Cartier, Paris, London, New York, numbered (partially indistinct)

SSEF, 2024, report no. 137242: Burma, no indications of heating

Size/Dimensions: 5.2 cm long

Gross weight: 11.5 grams

CHF60,000-80,000



59

MID-20TH CENTURY DIAMOND NECKLACE

Round, square-shaped, tapered baguette and baguette-cut diamonds, secondary diamond line detaches for alternative necklace composition, 1950s

GIA, 2024, report no. 2239193539: 3.25 carats, I colour, VVS2 clarity, potentially Internally Flawless

Size/Dimensions: 38.0 cm long

Gross weight: 69.3 grams

CHF200,000-300,000

PROVENANCE:

Private collection

Acquired by the current owner's family in London, in the early 1960s

“MY REASON FOR CHOOSING DIAMONDS IS THAT, DENSE AS THEY ARE, THEY REPRESENT THE GREATEST WORTH IN THE SMALLEST VOLUME.”

Coco Chanel



60
MID-20TH CENTURY PAIR OF DIAMOND EARRINGS

Pear brilliant-cut diamonds of 6.13 and 5.35 carats, pear-shaped and round diamonds, platinum, mid-20th century

GIA, 2024, report no. 2239193689: 6.13 carats, D colour, SI1 clarity, Type IIa
GIA, 2024, report no. 2235193691: 5.35 carats, D colour, SI1 clarity, Type IIa

Size/Dimensions: 3.6 and 3.5 cm high
Gross weight: 9.5 grams
CHF200,000-400,000

PROVENANCE:
Private collection
Acquired by the current owner's family in London, in the early 1960s



DIAMOND FLAMES

The “Flamme” brooches made their first appearance in 1934, replacing the geometric designs so typical of the previous decade.

Their extraordinary versatility and style contributed greatly to their popularity. They could be pinned on a hat, on clothes, or worn in the hair, exemplified by Maria Callas when attending a ball in Venice in 1957, and Jacqueline Kennedy during an official trip to Southern India. Such iconic fashion names strengthened the popularity of the “Flamme” brooches in the 1950s.

Van Cleef & Arpels made several variations of this iconic brooch that has remained a collector's item to this day.

61
TWO VAN CLEEF & ARPELS MID-20TH CENTURY DIAMOND 'FLAMME' CLIP-BROOCHES

Baguette-cut and round diamonds, platinum and 18k white gold (French marks), 1950s, signed Van Cleef & Arpels, maker's mark (Dumont Bouchard et Compagnie), numbered

Size/Dimensions: 8.1 and 7.4 cm long
Gross weight: 26.2 grams
CHF40,000-60,000

PROVENANCE:
Private collection
Acquired by the current owner's family in Paris

LITERATURE:
Cf. *Van Cleef & Arpels*, Paris-Musées, 1992, Paris, p.154, ill. 24 for a similar model





Detail of lot 62

“ONYX, DIAMONDS, EMERALDS...”

The panther, arguably one of the most recognized symbols of the House of Cartier, was adopted after the First World War by Jeanne Toussaint, the muse of Louis Cartier. The sleek, swift, elusive feline became the height of fashion during this age. Toussaint, who was made responsible for all of Cartier's original Jewellery in 1934, was obsessed with these cats. During a trip to Africa

with Cartier, the sight of a panther pursuing its prey provided her with the inspiration that was to prove pivotal to the House's creations of the period, "As soon as I saw it, I exclaimed, "Onyx, diamonds, emeralds... what a marvelous piece!"

Since that day, the panther, whose form lends itself perfectly to Jewellery design, has been worn by such society

legends as Woolworth heiress, Barbara Hutton, and the Duchess of Windsor. Still incorporated into the House's current production, the panther has proven a timeless and extremely elegant motif.



62

CARTIER MID-20TH CENTURY DIAMOND, ONYX AND EMERALD 'PANTHÈRE' CLIP-BROOCH

Round diamonds, buff-top onyx, pear-shaped emeralds, platinum and 18k white gold (French marks), articulated paws and tail, 1960s, signed Cartier, Paris, maker's mark (Cartier Société Anonyme), numbered

Size/Dimensions: 7.2 cm high

Gross weight: 50.3 grams

CHF250,000-350,000

PROVENANCE:

Private collection

Acquired by the current owner's family in the mid-1960s

LITERATURE:

Cf. Grand Palais, *Cartier le Style et l' Histoire*, 2014, p. 382, no. 580 for a drawing of a similar design

Cf. F. Cologni, E. Nussbaum, *Platinum by Cartier, Triumphs of the Jewelers' Art*, Harry N. Abrams, Inc., New York, 1995, p. 224

Cf. N. Coleno, *Étourdissant Cartier*, Éditions du Regard, Paris, 2008, p. 59 for a similar design

COMPARATIVE LOTS PREVIOUSLY OFFERED AT CHRISTIE'S



Magnificent Jewels New York

December 2021, Lot 173

Estimate: USD 200'000 - 300'000

Price realised: USD 550'000



Magnificent Jewels Geneva

May 2021, Lot 106

Estimate: CHF 150'000 - 250'000

Price realised: CHF 437'500



+63

**VAN CLEEF & ARPELS MID-20TH CENTURY
SAPPHIRE AND DIAMOND CLIP-BROOCH**

Oval-shaped sapphires, pear, round and baguette-cut diamonds, platinum and gold, fitted with a loop for wear as a pendant, circa 1960, signed VCA, numbered

Please refer to the Jewellery department for the SSEF gemmological report.

Size/Dimensions: 5.2 x 4.1 cm
Gross weight: 27.9 grams
CHF65,000-85,000



RIVIÈRE

The term *rivière*, meaning “river” in French, symbolizes a seamless, radiant flow around the neck. Characterized by a series of faceted gems graduating in size, the design originated from the late 17th century.

64

DIAMOND RIVIÈRE NECKLACE

Forty graduated round diamonds, baguette-cut diamonds, platinum and white gold, numbered

Size/Diamonds: 40.0 cm long
Gross weight: 39.4 grams
CHF55,000-75,000





RENÉ BRY

René Bry began his career as a silversmith in 1937, establishing his workshop at rue Sainte-Anne before moving to avenue de l'Opéra. In the early 1940s, he was nominated *administrateur* of Van Cleef & Arpels where he oversaw the stocks and accounting of the Company.

In 1944, he opened his first boutique, Bry & Cie, at 15 rue de la Paix. Thanks to this new visibility and the

great quality of the *Haute Joaillerie* pieces produced, René Bry's workshop rapidly became one of the largest workshops in Paris. In the 1950s, his son Claude joined him and together, they were awarded the Grand Prix at the Brussels World Exhibition, in 1958.

In the 1980s, his grandsons, Frédéric and Jean Marc also joined the family company.



+65

RENÉ BRY MID-20TH CENTURY DIAMOND NECKLACE / PAIR OF BRACELETS

Round and baguette-cut diamonds, detachable and may be worn as two bracelets with two additional clasp links, 1950s, platinum and 18k white gold (French marks), maker's mark (René Bry)

Accompanied by an advertisement print for Bry & Co., 1952

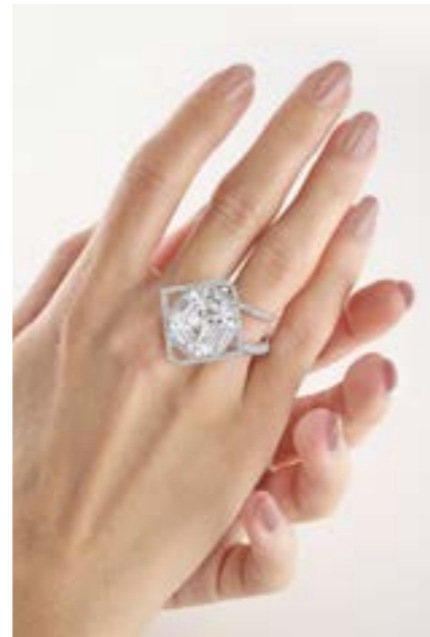
Size/Dimensions: necklace inner circumference 32.8 cm; bracelets inner circumference 17.5 and 17.0 cm

Gross weight: 238 grams

CHF250,000-300,000



(three views)



TAFFIN

A New York based high jewellery house founded by James de Givenchy in 1996, renowned for its sculptural designs and use of unusual materials.

Using unique and rare stones, he combines them with contemporary designs to create one-of-a-kind works of art.

+66

TAFFIN DIAMOND RING

Emerald-cut diamond of 23.15 carats, single-cut diamonds, platinum, signed Taffin, numbered, brown Taffin case

GIA, 2020, report no. 1122698735: 23.15 carats, D colour, Flawless, excellent polish and symmetry, Type IIa

Please refer to the Jewellery department for an update on the GIA gemmological report.

Size/Dimensions: EU ring size 51 / US ring size 5½

Gross weight: 15.9 grams

CHF1,250,000-1,800,000





(three views)



+67

COLOURED DIAMOND AND DIAMOND RING

Fancy deep yellow-orange oval modified brilliant-cut diamond of 8.01 carats, fancy-shaped diamonds, platinum and 18k yellow gold

GIA, 2024, report no. 2205782781: 8.01 carats, Fancy Deep Yellow-Orange, natural colour, SI1 clarity, excellent polish, medium yellow fluorescence

Size/Dimensions: EU ring size 51 / US ring size 5¾
Gross weight: 9.3 grams
CHF450,000-650,000

68

ADLER DIAMOND RING / PENDANT

Pear-shaped diamond of 11.27 carats, pear-shaped diamonds, platinum, the central diamond can be unmounted to be worn as pendant, signed Adler, black Adler pouch

GIA, 2024, report no. 2235206575: 11.27 carats, H colour, VS2 clarity, faint fluorescence, Type Ia

Size/Dimensions: US ring size 5¾
Gross weight: 9.5 grams
CHF110,000-170,000



(two views)

69

TABBAH DIAMOND RING

Emerald-cut diamond of 7.12 carats, triangular-shaped diamonds, 18k yellow gold (Swiss mark), signed Tabbah, bordeaux Tabbah case

GIA, 2024, report no. 2239228592: 7.12 carats, D colour, VVS1 clarity, potentially Internally Flawless, strong blue fluorescence

Size/Dimensions: EU ring size 53 / US ring size 6¾
Gross weight: 5.2 grams
CHF140,000-240,000



(two views)



(image of reduced size)



“IT WAS NOT SIMPLY A MATTER OF THE NAME; THE ‘MYSTERY CLOCK’ CONTAINED A SECRET THAT WAS SUPPOSED TO NEVER BE REVEALED.”

Hans Nadelhoffer,
Cartier: Jewelers Extraordinary

70
**CARTIER ART DECO MOTHER-OF-PEARL,
ROCK CRYSTAL, ONYX AND DIAMOND
'MODEL A' MYSTERY CLOCK**

Mother-of-pearl dial and panels, carved rock crystal case, carved onyx base, gold Roman numerals, rose-cut diamonds, key wound movement, silver and 18k yellow gold (French marks), circa 1925, signed Cartier, maker's marks (Cartier Société Anonyme to the dial and Maurice Couët), numbered, key and later red fitted Cartier case

Size/Dimensions: 13.8 x 9.1 x 5.2 cm (including the base)

Gross weight: 1'125.5 grams

CHF250,000-400,000

LITERATURE:

Cf. *Cartier. Le Style et l'Histoire*, Réunion des Musées Nationaux - Grand Palais, Paris, 2013, p. 258, for a similar model

Cf. H. Nadelhoffer, *Cartier*, Thames & Hudson, London, 2007, p. 227, for similar models

Please note that this lot incorporates material from endangered species which could result in export restrictions.

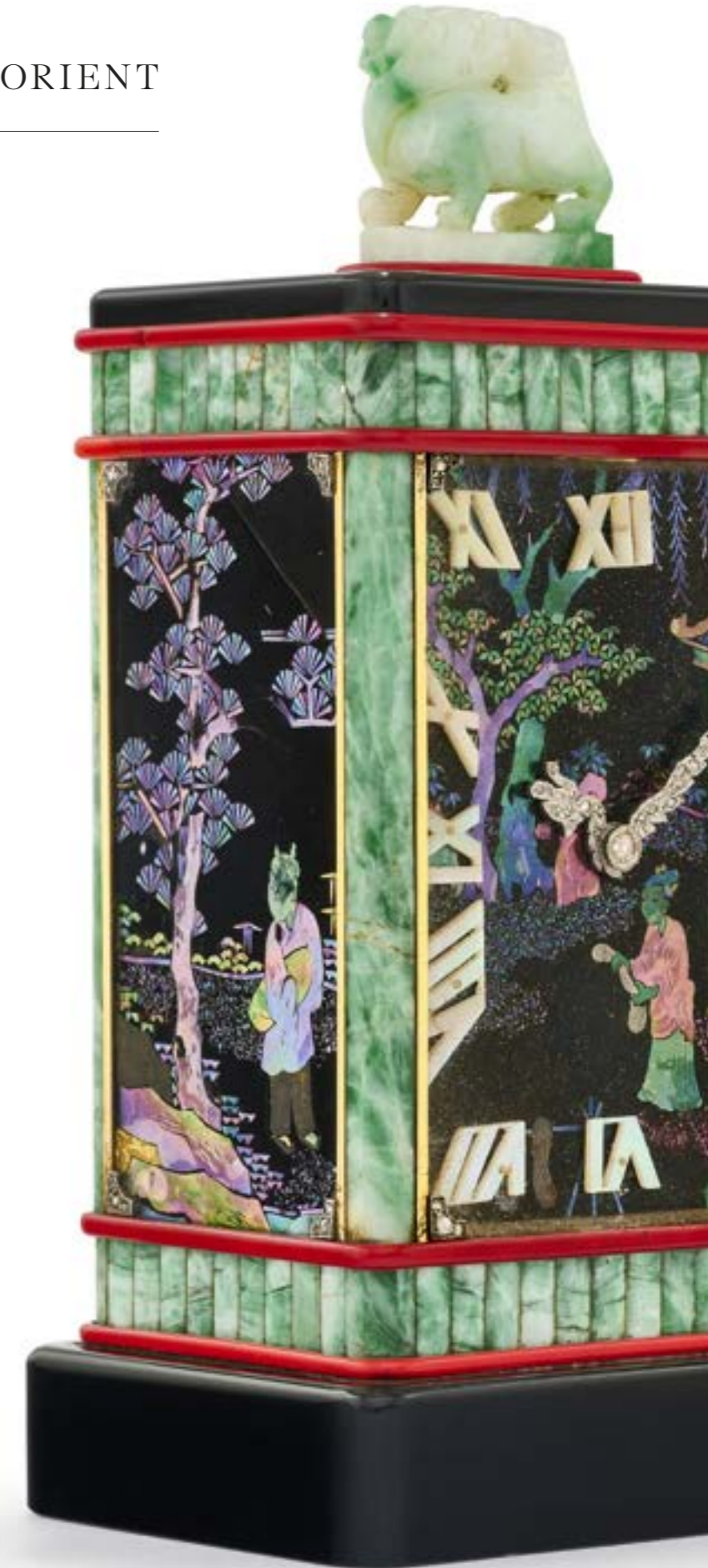
MODEL - A

The legendary relationship between Maurice Couët (1885-1963) and Louis Cartier at the beginning of the 20th century completed Cartier's reign as the leading firm for jewelled objects. Inspired by popular 19th century French magician and illusionist Jean Eugène Robert-Houdin, Couët blended exquisite craftsmanship, elegant design and the most technologically advanced mechanisms, resulting in works that continue to entertain and fascinate the observer with their illusion and beauty. Best-known for his '*pendules mystérieuses*' or 'mystery clocks', the young clockmaker astonished the industry by exploiting the use of illusion. First seen with the 'Model A' in 1913, and manufactured exclusively by the Paris branch, the mechanism of mystery clocks is hidden in the frame; the hands seem to float in space without any connection to the movement. In reality, rather than moving by conventional clock making techniques, the hands are set into two rotating transparent crystal discs with toothed metal rims that are driven by gears which are ingeniously hidden in the clock case.



INSPIRATION FROM THE ORIENT

Crafted with *burgauté* lacquer, adorned with scenes of Chinese everyday life and embellished with dragon-shaped hands and a carved jade 'Foo Dog', this model is one of a handful of examples produced by Cartier between 1926 and 1930. Famous for being protective guardians of tombs and found at the entrances of temples and palaces, 'Foo Dog', also known as Chinese imperial dogs or Buddha dogs, are mythical-creatures rich in symbolism. With roots in an ancient tradition and a strong connection to Buddhism, these mythical creatures, resembling lions, are believed to possess powers warding off evil spirits and safeguarding against misfortune, thereby preserving positive energy.



+71

CARTIER ART DECO LACQUER AND MULTI-GEM MINUTE REPEATER TABLE CLOCK

Rectangular *burgauté* lacquer dial, mother-of-pearl Roman numerals, rose-cut diamonds, carved jade and panels, onyx top and base, red enamel, 18k yellow gold (French marks), key-wound movement, circa 1927, signed Cartier, numbered, key and red fitted Cartier case

Size/Dimensions: 12.3 x 6.1 x 4.5 cm

Gross weight: 719.0 grams

CHF100,000-150,000

LITERATURE:

Cf. H. Nadelhoffer *Cartier*, Editions du Regard, Paris, 1984, p. 164 ill. 36

Cf. *El Arte de Cartier, Resplandor del Tiempo*, Instituto Nacional de Bellas Artes, Landucci Editores, 1999, p. 164 for a drawing of the same model

Cf. O. Bachet, A. Cartier, *Cartier, Exceptional Objects*, Éditions Palais Royal, 2019, book I, p. 300 and 301 for the same model

30.03 AND 30.02 CARATS



+72

PAIR OF DIAMOND EARRINGS

Pear brilliant-cut diamonds of 30.03 and 30.02 carats, round diamonds, platinum

GIA, 2023, report no.1236137653: 30.03 carats, K colour, VS2 clarity, excellent polish and symmetry, faint fluorescence

GIA, 2023, report no. 5234143573: 30.02 carats, K colour, VS2 clarity, excellent polish, faint fluorescence

Size/Dimensions: 4.5 cm high

Gross weight: 23.1 grams

CHF1,000,000-1,500,000



SAPPHIRES ORIGINS



+73

SAPPHIRE AND DIAMOND RING

Oval-shaped sapphire of 14.38 carats, round diamonds, platinum iridium and 18k white gold

SSEF, 2024, report no. 136089: 14.382 carats, Madagascar, no indications of heating

Size/Dimensions: EU ring size 53 / US ring size 6½

Gross weight: 12.2 grams

CHF60,000-80,000



(two views)



+74

SAPPHIRE AND DIAMOND RING

Cushion-shaped sapphire of 11.08 carats, pear-shaped diamonds, platinum and 18k white gold

Gübelin, 2022, report no. 22060126: 11.08 carats, Burma (Myanmar), no indications of heating, with Information Sheet on Unheated Sapphires

Size/Dimensions: EU ring size 52 / US ring size 6

Gross weight: 8.1 grams

CHF240,000-290,000



(two views)





(image of reduced size)



+75

REZA SUITE OF SAPPHIRE AND DIAMOND JEWELLERY

Comprising a necklace, a bracelet, a pair of earrings and a ring
 Oval-shaped sapphires, round and baguette-cut diamonds, 18k yellow gold (French marks), earrings 18k and 14k yellow gold, two additional fittings to make the necklace/bracelet longer, signed A. Reza, maker's mark

SSEF, 2024, report no. 137245 (necklace): 5 sapphires, Ceylon (Sri Lanka), no indications of heating
 SSEF, 2024, report no. 137246 (bracelet): 3 sapphires Ceylon (Sri Lanka), no indications of heating
 SSEF, 2024, report no. 137247 (earrings): 2 sapphires, Ceylon (Sri Lanka), no indications of heating
 SSEF, 2024, report no. 137248 (ring): Ceylon (Sri Lanka), no indications of heating

Size/Dimensions: necklace 36.2 cm long; bracelet 17.0 cm long; earrings 3.5 cm high; EU ring size 51 / US ring size 5¾; two fittings 5.7 and 2.6 cm long
 Gross weight: 154.9 grams
 CHF120,000-180,000



(three views)



+76

BULGARI SAPPHIRE AND DIAMOND 'TROMBINO' RING

Oval modified mixed-cut sapphire of 39.06 carats, baguette-cut and round diamonds, 18k yellow gold (Italian mark), signed Bvlgari, black Bulgari case

Gübelin, 2023, report no. 23117101: 39.06 carats, Sri Lanka (Ceylon), no indications of heating

Size/Dimensions: EU ring size 55 / US ring size 7
 Gross weight: 26.7 grams
 CHF200,000-270,000

15.64 CARATS ROYAL BLUE



(two views)

+77

VILLA SAPPHIRE AND DIAMOND RING

Octagonal-shaped sapphire, triangular-shaped diamonds, 18k white gold (Italian marks), signed Villa, maker's mark

Please refer to the Jewellery department for the SSEF gemmological report.

Size/Dimensions: EU ring size 47 / US ring size 4 (with U-shaped ring sizer)

Gross weight: 22.8 grams

CHF200,000-400,000



(three views)



+78

CUSI SAPPHIRE AND DIAMOND RING

Oval-shaped sapphire of 14.84 carats, tapered baguette-cut and round diamonds, 18k yellow gold (Italian mark), signed Cusi

SSEF, 2024, report no. 137274: 14.84 carats, Ceylon (Sri Lanka), no indications of heating

Gübelin, 2023, report no. 23020069: 14.84 carats, Burma, no indications of heating, with Information Sheet on Unheated Sapphires

Size/Dimensions: EU ring size 53½ / US ring size 6½

Gross weight: 18.2 grams

CHF90,000-140,000



(two views)

+79

TABBAH SAPPHIRE AND DIAMOND RING

Cushion-shaped sapphire of 15.64 carats, round diamonds, 18k yellow gold (French mark), signed Tabbah, maker's mark (Cauet)

SSEF, 2024, report no. 135928: 15.640 carats, Burma (Myanmar), no indications of heating, Royal Blue

Please refer to the Jewellery department for the Gübelin gemmological report.

Size/Dimensions: EU ring size 52 / US ring size 6

Gross weight: 11.1 grams

CHF280,000-480,000



(two views)

80
SAPPHIRE AND DIAMOND RING

Cushion-shaped sapphire of 9.37 carats, trapeze-shaped diamonds, platinum (French mark) and 18k yellow gold, numbered

SSEF, 2024, report no. 137045: 9.37 carats, Kashmir, no indications of heating
Gübelin, 2024, report no. 24030121: 9.37 carats, Kashmir, no indications of heating, with Information Sheet on Unheated Sapphires

Size/Dimensions: EU ring size 55 / US ring size 7
Gross weight: 6.6 grams
CHF200,000-300,000



(two views)

81
EMERALD AND DIAMOND RING

Rectangular-shaped emerald of 3.88 carats, pear-shaped diamonds, platinum and 18k yellow gold (French marks), numbered

SSEF, 2024, report no. 137046: 3.88 carats, Colombia, minor amount of oil in fissures

Size/Dimensions: EU ring size 55 / US ring size 7
Gross weight: 4.7 grams
CHF50,000-70,000



(two views)

82
DIAMOND RING

Square emerald-cut diamond of 10.88 carats, tapered baguette-cut diamonds, platinum

GIA, 2024, report no. 5100998: 10.88 carats, D colour, VVS2 clarity, potentially Internally Flawless, Type IaB

Size/Dimensions: approximate EU ring size 53½ / approximate US ring size 6½ (with sizing beads)
Gross weight: 8.0 grams
CHF450,000-650,000



THREE EXCEPTIONAL GEMSTONES





(two views)

+85

EMERALD AND DIAMOND RING

Octagonal step-cut emerald of 17.60 carats, fancy-shaped diamonds, platinum (French mark) and gold

SSEF, 2023, report no. 127947: 17.605 carats, Colombia, minor amount of oil in fissures

Size/Dimensions: approximate EU ring size 49 / US ring size 5 (with U-shaped ring sizer)

Gross weight: 11.4 grams

CHF420,000-600,000



(two views)

+84

IMPORTANT RUBY AND DIAMOND RING

Cushion-shaped ruby of 5.03 carats, old-cut diamonds, 18k yellow gold and platinum

SSEF, 2023, report no. 134682: 5.034 carats, Burma (Myanmar), no indications of heating, Pigeon Blood, with Appendix Letter on exceptional quality and rarity

Size/Dimensions: EU ring size 47 / US ring size 4

Gross weight: 6.4 grams

CHF650,000-1,000,000





(image of reduced size)



+85

SUITE OF EMERALD AND DIAMOND JEWELLERY

Comprising a necklace, a pair of earrings and a ring
 Pear-shaped emeralds, pear-shaped and round diamonds, 18k white and yellow gold (Italian marks), necklace with pendant detachable

SSEF, 2023, report no. 128613 (necklace): 12 emeralds, Colombia, minor to moderate amount of artificial resin in fissures

SSEF, 2023, report no. 128614 (earrings): 2 emeralds, Colombia, moderate amount of artificial resin in fissures

SSEF, 2023, report no. 128615 (ring): Colombia, moderate amount of artificial resin in fissures

Size/Dimensions: necklace 38.1 cm long; earrings 5.2 cm high; EU ring size 53 / US ring size 6¼

Gross weight: 135.7 grams

CHF200,000-300,000

86

DIAMOND RING

Emerald-cut diamond of 22.08 carats, half-moon shaped diamonds, platinum

GIA, 2024, report no. 2239206572: 22.08 carats, H colour, VS2 clarity, Type Ia

Size/Dimensions: EU ring size 52 / US ring size 6

Gross weight: 11.8 grams

CHF320,000-420,000



(two views)

87

FÜRST EMERALD AND DIAMOND EARRINGS

Octagonal step-cut emeralds of 5.24 and 5.23 carats, pear brilliant-cut diamonds of 1.10 and 1.01 carats, pear-shaped and marquise-cut diamonds, platinum and 18k white gold, signed Fürst, Roma

SSEF, 2022, report no. 123189: 5.241 and 5.234 carats, Colombia, 5.241 carats with minor amount of oil in fissures, 5.234 carats with moderate amount of oil in fissures

GIA, 2022, report no. 2223504505: 1.10 carats, D colour, VS1 clarity

GIA, 2022, report no. 6224504499: 1.01 carats, E colour, VS1 clarity, faint fluorescence

Size/Dimensions: 3.0 cm high

Gross weight: 21.9 grams

CHF130,000-180,000



LOT 88 NO LOT

BUCCELLATI'S ALLURE

Buccellati's rich family legacy is synonymous with timeless design and unique craftsmanship. Opening its first store at Via Santa Margherita 5 in Milan in 1919, Mario Buccellati faced one of the greatest challenges in jewellery history: transforming tulle and lace into jewels made of precious metals, creating the house's distinctive identity.

The precious metal surfaces were worked and engraved using different designs such as

telato, *rigato*, *modellato* and *ornato* before being embellished with the finest gemstones and diamonds.

By the mid-20th century his three sons joined him, and it was Gianmaria, his eldest son, who further developed the brand's creativity, respecting Renaissance techniques and adding a French Rococo influence.

Lots 89 and 90 exemplify Buccellati's unique identity and never-ending eye for detail.



(three views)



+89

BUCCELLATI DIAMOND RING

Old-cut diamond, single-cut and round diamonds, rhodium plated gold and 18k yellow gold (Italian mark), signed Gianmaria Buccellati, maker's mark, numbered, grey Buccellati case

Size/Dimensions: EU ring size 43 / US ring size 2½ (with U-shaped ring sizer)

Gross weight: 9.3 grams

CHF110,000-160,000



“EVERY NUANCE OF THE PAST CAN BE REVISITED, EVEN REDISCOVERED, USING THOUGHTFUL RESEARCH”.

Gianmaria Buccellati

+90

BUCCELLATI SET OF DIAMOND 'TULLE' JEWELLERY

Briolette, single-cut and round diamonds, rhodium plated gold and 18k yellow gold (Italian mark), signed Gianmaria Buccellati, maker's mark, grey Buccellati case

Size/Dimensions: necklace approximately 38.5 cm; earrings 7.4 cm high

Gross weight: 119.8 grams

CHF100,000-150,000





+91
MAUBOUSSIN ART DECO MULTI-GEM AND ENAMEL BRACELET

Carved jadeite plaques, white chalcidony links, old and single-cut diamonds, round and triangular-shaped cabochon rubies, blue and black enamel, platinum and 18k yellow gold (French marks), 1928, unsigned, numbered

Mauboussin, 2024: Certificate of Authenticity

Size/Dimensions: 18.6 cm long
 Gross weight: 69.9 grams
 CHF75,000-85,000

PROVENANCE:
 Sotheby's, Geneva, May 2017, sale number GE1602, lot 229



MAUBOUSSIN

The origins of this renowned jewellery house go back to 1827 when Mr. Rocher and his cousin Baptiste Noury first opened their doors in Paris. The jeweller evolved and in 1896, Georges Mauboussin, Noury's nephew, took over. By 1922, the business adopted the name "Mauboussin, Successeur de Noury," eventually shortened to "Mauboussin."

Throughout the early 20th century, the house exhibited at major international events, and were awarded the Grand Prix at the 1925 Exposition des Arts Décoratifs, in Paris. Georges himself received the "Légion d'Honneur".

In October 1929, Mauboussin expanded to New York, shortly before the stock market crash. A merger followed with American jeweller Trabert & Hoeffler, operating as "Trabert & Hoeffler - Mauboussin" until the 1950s. Mauboussin is now headquartered at 20, Place Vendôme.

+92

CARTIER ART DECO SAPPHIRE AND DIAMOND CLIP-BROOCH

Hexagonal-shaped sapphire of 3.04 carats, oval-shaped sapphire of 1.69 carats, rectangular, square and pear-shaped sapphires, round and baguette-cut diamonds, platinum (French mark) and 18k white gold, circa 1935, signed Cartier and Cartier, London, numbered

SSEF, 2023, report no. 128367: 3.040 carats, Kashmir, no indications of heating
 SSEF, 2023, report no. 128368: 1.690 carats, Burma (Myanmar), no indications of heating

Size/Dimensions: 3.3 x 2.8 cm
 Gross weight: 22.7 grams
 CHF90,000-140,000



+93

ART DECO RUBY AND DIAMOND BROOCH

Oval-shaped ruby, old, single and baguette-cut diamonds, circa 1935

Please refer to the Jewellery department for the SSEF gemmological report.

Size/Dimensions: 4.8 x 5.0 cm
 Gross weight: 29.9 grams
 CHF65,000-85,000





+94

RUBEL FRÈRES ART DECO DIAMOND BRACELET

Old, baguette and triangular-cut diamonds, platinum, circa 1935, maker's mark (Rubel Frères)

Size/Dimensions: 16.5 cm long, fan motif 6.5 cm wide

Gross weight: 120.4 grams

CHF220,000-320,000





(three views)



+95

DIAMOND RING

Emerald-cut diamond of 20.16 carats, fancy-shaped diamonds, platinum

GIA, 2023, report no. 10534059: 20.16 carats, D colour, VVS2 clarity, strong blue fluorescence

Size/Dimensions: EU ring size 51 / US ring size 5¾

Gross weight: 11.0 grams

CHF500,000-700,000





(two views)

96
COLOURED NATURAL PEARL AND DIAMOND RING

Brown natural pearl measuring approximately 14.12 – 13.52 mm, pear-shaped diamonds, 18k yellow gold, numbered

SSEF, 2024, report no. 137093: natural pearl, saltwater, no indications of colour modification

Size/Dimensions: EU ring size 52 / US ring size 6 (with two sizing beads)

Gross weight: 6.0 grams

CHF35,000-55,000



+97
ART DECO NATURAL PEARL AND DIAMOND EARRINGS

Drop-shaped natural pearls measuring approximately 11.10 – 11.92 x 16.05 and 11.30 – 11.40 x 17.10 mm, baguette, single-cut, square-shaped and round diamonds, platinum and 18k yellow gold (French marks), circa 1925, maker's marks (Robert Ehret)

Please refer to the Jewellery department for the SSEF gemmological report.

Size/Dimensions: 5.2 cm high

Gross weight: 14.0 grams

CHF100,000-150,000

PROVENANCE:

By family tradition this lot was acquired at Bulgari.



+98
NATURAL COLOURED PEARL AND DIAMOND NECKLACE

Variously-shaped natural pearls and seed pearls of different hues, faceted beads, single-cut and round diamonds, platinum and gold

SSEF, 2023, report no. 133418: natural pearls, saltwater except for a few seed pearls, no indications of artificial colour modification (based on a sampling)

Size/Dimensions: 41.0 cm long

Gross weight: 74.6 grams

CHF180,000-270,000

Please note that the seed pearls have not been fully tested.





Lot 99 shown in hand

+99

TWO EXTRAORDINARY NATURAL PEARL SAUTOIRS

Longest sautoir comprising a total of 171 round to oval and button-shaped natural pearls, ranging approximately from 12.55 to 4.45 mm; shortest sautoir comprising a total of 182 round to roundish and button-shaped natural pearls, ranging approximately from 10.75 to 4.10 mm

SSEF, 2021, report no. 117029: 171 natural pearls, saltwater, with Appendix Letter attesting to the rare and exceptional quality of the pearls

SSEF, 2021, report no. 116696: 182 natural pearls, saltwater, with Appendix Letter attesting to the rare and exceptional quality of the pearls

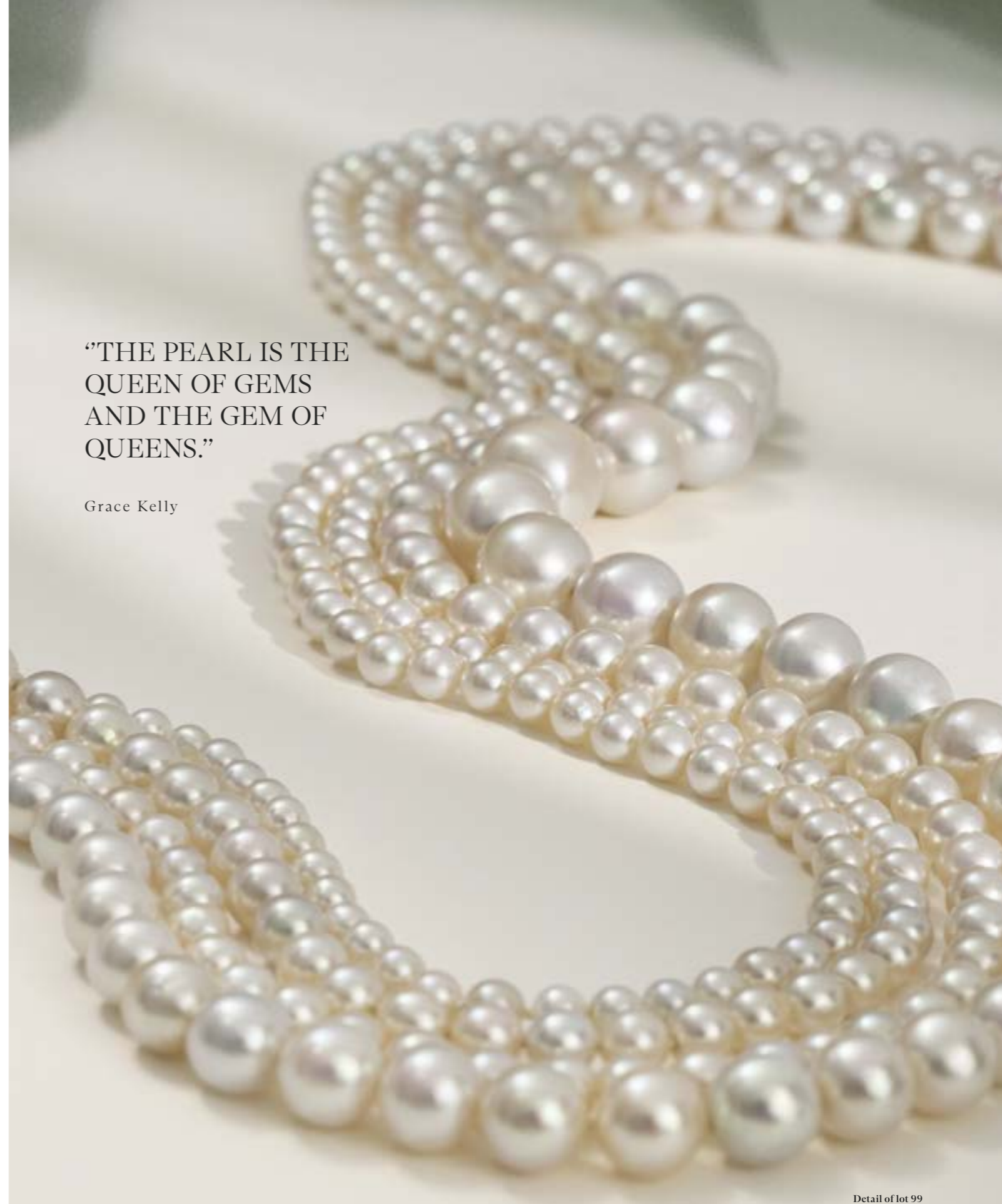
Size/Dimensions: longest sautoir inner circumference 119.0 cm; shortest sautoir inner circumference 112.0 cm
Gross weight: 156.9 grams

CHF1,600,000-2,300,000



“THE PEARL IS THE
QUEEN OF GEMS
AND THE GEM OF
QUEENS.”

Grace Kelly





JAR

The imagination of Joel Arthur Rosenthal, known to collectors as JAR, seems without limits. One of the most celebrated and exclusive contemporary jewellers, he is the creator of unique jewels unlike any others. His work is meticulously crafted and imaginative, creating pieces that are instantly identifiable, incorporating stones in brilliant and unexpected combinations, cut and mounted to complete a subtle and mysterious design. His

chosen palette is the rich and vivid spectrum of any unusually-coloured gemstone, such as delicate pink morganites and light blue sapphires, as visible in lot 102, or the use of vibrant blue lapis lazuli, as shown in lot 103.

Joel Rosenthal blends these rare gems with a sure touch into pieces of virtuosity and originality, inspired by his observations of nature and by painters who have influenced him.



(two views)

+100

JAR EMERALD AND DIAMOND 'BONNET' RING

Rectangular-shaped diamond, round diamonds and emeralds, 18k yellow gold and silver (French marks), signed JAR, Paris

Please refer to the Jewellery department for the GIA gemmological report.

Size/Dimensions: EU ring size 54 / US ring size 6¾

Gross weight: 8.8 grams

CHF100,000-150,000



+102

JAR LAPIS LAZULI AND DIAMOND 'FAN' EARRINGS

Lapis lazuli plates, round diamonds, 18k yellow gold (French marks) and blackened silver, one earring signed JAR, Paris, numbered, pink JAR case

Size/Dimensions: 4.4 x 7.7 cm

Gross weight: 75.0 grams

CHF90,000-150,000



(two views)

+101

JAR SAPPHIRE AND DIAMOND RING

Sugarloaf sapphire, round diamonds, 22k yellow gold and blackened silver, 2002, signed JAR, pink JAR pouch

SSEF, 2024, report no. 136576: Ceylon (Sri Lanka), no indications of heating

Size/Dimensions: EU ring size 53 / US ring size 6½

Gross weight: 42.7 grams

CHF100,000-150,000

EXHIBITED:

The Jewels of JAR Paris, Somerset House, London, 2002 - 2003

LITERATURE:

JAR Paris, Metropolitan Museum of Art, Paris, 2012, Volume II, plate 123





+103

JAR PAIR OF MORGANITE AND SAPPHIRE CLIP-BROOCHES

Oval-shaped morganites, round sapphires, 18k rose gold and blackened silver (French marks), signed JAR, Paris, pink JAR case

Size/Dimensions: 5.7 cm high

Gross weight: 59.9 grams

CHF50,000-70,000



104

JAR PAIR OF MULTI-GEM 'VIOLET' EARRINGS

Round amethysts and diamonds, purple and pink sapphires, round yellow diamonds, 18k rose gold and blackened silver (French marks), signed JAR, Paris, pink JAR case

Size/Dimensions: 3.7 cm high

Gross weight: 28.8 grams

CHF150,000-250,000

LITERATURE:

Cf. JAR Paris, Somerset House, Paris, 2002, Volume I, plate 302 and 356 for a similar design

Please note that the coloured diamonds have not been tested for natural colour.





(three views)



+105

RARE GRAFF SAPPHIRE AND DIAMOND RING

Sugarloaf sapphire of 30.37 carats, triangular-shaped diamonds, platinum, signed Graff

Gübelin, 2006, report no. 0606075: 30.37 carats, Burma (Myanmar), no indication of heating
Graff: Certificate of Quality

Please refer to the Jewellery department for an update of the Gübelin and a new SSEF gemmological reports.

Size/Dimensions: EU ring size 52 / US ring size 6
Gross weight: 19.5 grams
CHF600,000-800,000



THE YELLOW ROSE



YELLOW DIAMONDS OVER 100CT SOLD AT AUCTION



THE RED CROSS
205.07 carats, Fancy Intense Yellow, VS2 clarity

Geneva, May 2022
Sold for USD 15'599'375
Price per carat: USD 76'069



THE DANCING SUN
204.36 carats, Fancy Intense Yellow, VVS2 clarity

New York, June 2021
Sold for USD 4'950'000
Price per carat: USD 24'222



THE MOUNA DIAMOND
Mounted by Bulgari
112.53 carats, Fancy Intense Yellow, VS1 clarity

Geneva, November 1998
Sold for USD 3'237'867
Price per carat: USD 28'773



THE SIBA DIAMOND
118.05 carats, Fancy Yellow, VS2 clarity

Geneva, May 2019
Sold for USD 7'034'243
Price per carat: USD 59'587



Flora Japonica, Sectio Prima, 1870.
Philipp Franz von Siebold and Joseph Gerhard Zuccarini

THE YELLOW ROSE

Native to China, the *Kerria Japonica*, commonly called 'Yellow Rose', is a beautiful pom-pom like yellow flower full of symbolism.

Originally representing wealth and prosperity, today, the 'yellow roses' are also cherished as symbols of friendship and joy.



+106

THE YELLOW ROSE UNMOUNTED COLOURED DIAMOND

Fancy intense yellow pear modified brilliant-cut diamond of 202.18 carats

GIA, 2022, report no. 5222440622: 202.18 carats, Fancy Intense Yellow, natural colour, SI1 clarity, excellent polish and symmetry, medium blue fluorescence

Size/Dimensions: 46.56 x 30.23 x 19.23 mm

Gross weight: 40.4 grams

Estimate on Request

PROVENANCE:
South Africa



5.05 CARATS
PIGEON BLOOD



(three views)



+107

EXCEPTIONAL BULGARI RUBY AND DIAMOND
'TROMBINO' RING

Octagonal-shaped ruby, baguette-cut and round diamonds, 18k yellow gold
(Italian mark), signed Bulgari

SSEF, 2023, report no. 130822: declared weight of 5.05 carats, Burma
(Myanmar), no indications of heating, Pigeon Blood
Gübelin, 2024, report no. 24030077: Burma (Myanmar), no indications of
heating, with Information Sheets on Unheated rubies and Rubies from Mogok

Size/Dimensions: EU ring size 58 / US rings size 8¼

Gross weight: 12.3 grams

CHF300,000-500,000



“THE RUBY IS THE
PRINCE OF GEMSTONES”

Jean-Baptiste Tavernier



AN IMPRESSIVE CARTIER EARLY ART DECO ONYX AND DIAMOND BROOCH

The Art Deco period, spanning roughly from the 1920s to the late 1930s, emerged as a bold and influential movement in art, design, jewellery and architecture. It was a time of cultural upheaval following the First World War, marked by a desire for innovation, sophistication, and glamour.

Originating in Paris, France, Art Deco drew inspiration from various sources, including ancient Egyptian, African, and Aztec art, as well as modern advancements in technology and machinery. The movement aimed to break away from the ornate and intricate designs of the preceding Art Nouveau era, instead embracing geometric

shapes, clean lines, and luxurious materials.

Art Deco style is characterized by its sleek, streamlined forms, often featuring symmetrical patterns and bold contrasts. In architecture, Art Deco manifested in the design of skyscrapers, cinemas, and department stores, with iconic examples including the Chrysler Building in New York City and the Palais de Chaillot in Paris.

The influence of Art Deco extended beyond architecture to encompass fashion, furniture, jewellery, and graphic design. In fashion, sleek silhouettes, bold patterns, and luxurious textiles epitomized the glamour of

the Roaring Twenties era. Art Deco jewellery became synonymous with elegance and opulence, featuring geometric motifs, vibrant gemstones, and intricate metalwork. Renowned jewellery houses such as Cartier and Van Cleef & Arpels produced iconic pieces such as Lot 106 that captured the spirit of the era with exquisite workmanship.

Despite its relatively short-lived prominence, the legacy of Art Deco endures to this day, influencing contemporary design and culture. Its timeless elegance, bold aesthetic, and celebration of modernity continue to captivate and inspire artists, designers, and enthusiasts around the world.



+108

**EXCEPTIONAL CARTIER ART DECO DIAMOND
AND ONYX BROOCH**

Old and single-cut diamonds, calibré-cut, pear, square and fancy-shaped onyx,
platinum, circa 1920, signed Cartier, New York

Size/Dimensions: 9.6 cm high

Gross weight: 33.4 grams

CHF280,000-450,000

PROVENANCE:

Christie's, New York, December 2010, sale number 2365, lot 201



INDEX

A	
Adler	68
B	
Boivin, R.	10, 11
Boucheron	16, 30
Bry, R.	65
Buccellati	89, 90
Bulgari	41, 54, 76, 107
C	
Cartier	7, 27, 28, 35, 36, 51, 58, 62, 70, 71, 92, 108
Chaumet	6
Cusi	78
D	
della Valle, M.	25
F	
Fabergé	55, 56, 57
Fürst	87
G	
Graff	105
I	
Illario	4
J	
JAR	100, 101, 102, 103, 104
K	
Kat Florence	31
M	
Mauboussin	91
R	
Reza	75
T	
Tabbah	39, 69, 79
Taffin	66
Tiffany & Co.	45
V	
Van Cleef & Arpels	1, 3, 15, 19, 20, 21, 22, 38, 40, 61, 63
Verdura	17
Villa	2, 77



CONVERSION CHART

Ring Size

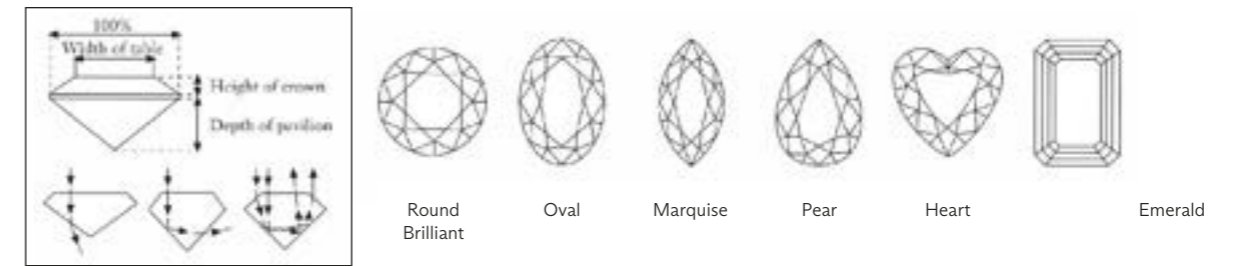
AMERICAN	FRENCH/JAPANESE	ENGLISH	METRIC
1/2	—	A	37.8252
3/4	—	A 1/2	38.4237
1	—	B	39.0222
1 1/4	—	B 1/2	39.6207
1 1/2	—	C	40.2192
1 3/4	—	C 1/2	40.8177
2	1	D	41.4162
2 1/4	2	D 1/2	42.0147
2 1/2	—	E	42.6132
2 3/4	3	E 1/2	43.2117
3	4	F	43.8102
3 1/4	—	F 1/2	44.4087
3 1/2	5	G	45.0072
3 3/4	—	G 1/2	45.6057
4	6	H	46.2042
4 1/4	—	H 1/2	46.8027
4 1/2	7	I	47.4012
4 3/4	8	I 1/2	47.9997
5	—	J	48.5982
5 1/4	9	J 1/2	49.1967
5 1/2	10	K	49.7952
5 3/4	—	K 1/2	50.3937
6	11	L	50.9922
6 1/4	—	L 1/2	51.5907
6 1/2	12	M	52.1892
6 3/4	13	M 1/2	52.7877
7	—	N	53.4660
7 1/4	14	N 1/2	54.1044
7 1/2	15	O	54.7428
7 3/4	—	O 1/2	55.3812
8	16	P	56.0196
8 1/4	—	P 1/2	56.6580
8 1/2	17	Q	57.2964
8 3/4	18	Q 1/2	57.9348
9	—	R	58.5732
9 1/4	19	R 1/2	59.2116
9 1/2	20	S	59.8500
9 3/4	—	S 1/2	60.4884
10	21	T	61.1268
10 1/4	22	T 1/2	61.7652
10 1/2	—	U	62.4026
10 3/4	23	U 1/2	63.0420
11	24	V	63.6804
11 1/4	—	V 1/2	64.3188
11 1/2	25	W	64.8774
11 3/4	—	W 1/2	65.4759
12	26	X	66.0744
12 1/4	—	X 1/2	66.6729
12 1/2	—	Y	67.2714
12 3/4	—	Y 1/2	67.8699
13	—	Z	68.4684

Measurements

INCHES	CM
1	2.54
2	5.08
3	7.62
4	10.16
5	12.70
6	15.24
7	17.78
8	20.32
9	22.86
10	25.40
11	27.94
12	30.48
13	33.02
14	35.56
15	38.10
16	40.64
17	43.18
18	45.72

DIAMONDS • THE 4 C'S

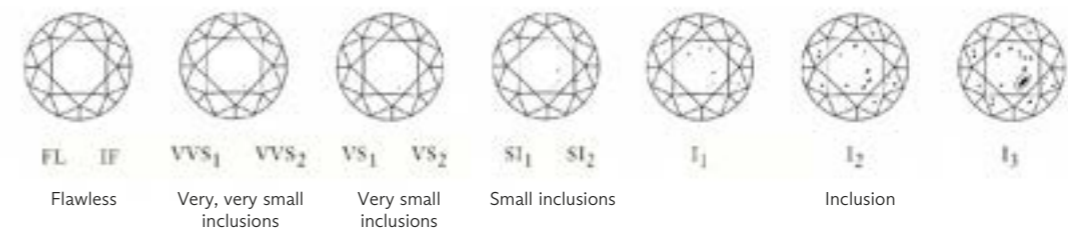
Cut



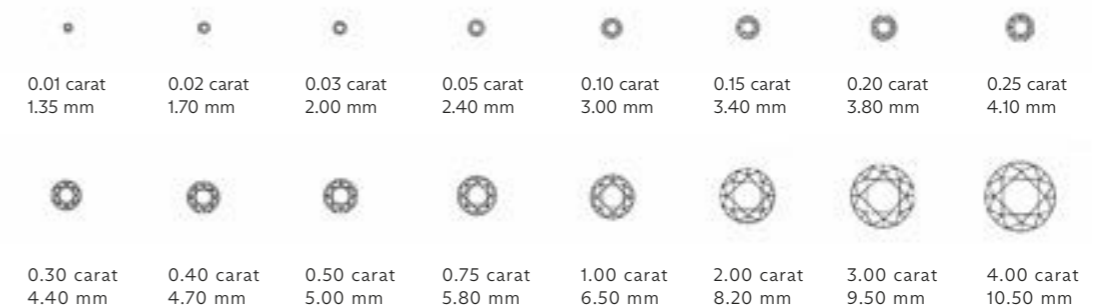
Colour (G.I.A.)



Clarity (G.I.A.)



Carat



Courtesy of Jewellers Network, the Southern African Jewellery Trade Directory, from information supplied by De Beers.
www.jewellersnetwork.co.za

COLOURLESS DIAMOND INDEX

LOT	WEIGHT	COLOUR	CLARITY	CUT
66	23.15	D	FL, Type IIa	Emerald
32	30.02	D	IF, Type IIa	Pear
51	20.02	D	IF, Type IIa	Pear
53	9.10	D	IF, Type IIa	Briolette
69	7.12	D	VVS1, Potential	Emerald
42	11.17	D	VVS1, Potential, Type IIa	Pear
9	9.42	D	VVS1, Potential, Type IIa	Marquise
95	20.16	D	VVS2	Emerald
82	10.88	D	VVS2, Potential, Type IaB	Square
29	12.76	D	VS2	Oval
2	5.03	G	VS2	Square
	5.02	F	VS1	Square
86	22.08	H	VS2, Type Ia	Emerald
68	11.27	H	VS2, Type Ia	Pear
72	30.03	K	VS2	Pear
	30.02	K	VS2	Pear
43	51.84	S-T	VS2	Square

COLOURED DIAMOND INDEX

LOT	WEIGHT	COLOUR	CLARITY	CUT
5	9.55	Fancy Vivid Yellow	VS1	Cushion
106	202.18	Fancy Intense Yellow	SI1	Pear
67	8.01	Fancy Deep Yellow Orange	SI1	Oval

COLOURED STONE INDEX

SAPPHIRE

LOT	WEIGHT	ORIGIN	TREATMENT	CUT
16	16.44	Kashmir	No heat	Sugarloaf
47	11.03	Kashmir	No heat	Cushion
80	9.37	Kashmir	No heat	Cushion
4	4.31	Kashmir	No heat, Royal Blue	Cushion
	4.06	Kashmir	No heat	Cushion
24	52.88	Burma	No heat	Cushion
105	30.37	Burma	No heat	Sugarloaf
12	21.01	Burma	No heat	Oval
79	15.64	Burma	No heat, Royal Blue	Cushion
74	11.08	Burma	No heat	Cushion
14	10.16	Burma	No heat	Cushion
40	7.00	Burma	No heat	Oval
76	39.06	Ceylon	No heat	Oval
101	33.50*	Ceylon	No heat	Sugarloaf
78	14.84	Ceylon / Burma	No heat	Oval
20	3.40*	Ceylon	Heated	Oval
	3.40*	Ceylon	Heated	Oval
73	14.38	Madagascar	No heat	Oval

COLOURED SAPPHIRES

LOT	STONE	WEIGHT	ORIGIN	TREATMENT	CUT
48	Pink Sapphire	25.20	Ceylon	No heat	Cushion
8	Padparadscha Sapphire	13.17	Ceylon	No heat	Oval
23	Yellow Sapphire	50.90	not specified	No heat	Cushion

RUBY

LOT	WEIGHT	ORIGIN	TREATMENT	CUT
13	7.70	Burma	No heat	Oval
39	7.06	Burma	No heat, minor oil	Oval
41	6.53	Burma	No heat	Oval
50	6.05	Burma	No heat	Cushion
107	5.05	Burma	No heat, Pigeon Blood	Octagonal
84	5.03	Burma	No heat, Pigeon blood	Cushion
49	3.12	Burma	No heat, minor oil	Cushion
	3.05	Burma	No heat, Pigeon Blood	Cushion
58	3.00*	Burma	No heat	Cushion

EMERALD

LOT	WEIGHT	ORIGIN	TREATMENT	CUT
46	15.94	Colombia	No oil	Octagonal
52	7.72	Colombia	No oil	Octagonal
83	17.60	Colombia	Minor oil	Octagonal
38	10.00	Colombia	Minor oil	Octagonal
81	3.88	Colombia	Minor oil	Rectangular
87	5.24	Colombia	Minor oil	Octagonal
	5.23	Colombia	Moderate oil	Octagonal
34	38.50*	Colombia	Moderate oil	Cabochon
54	24.00*	Colombia	Moderate oil	Rectangular

As a leader in the art market,

Christie's is committed to building a **sustainable business model** that promotes and protects the environment. Our digital platform on christies.com offers a conscious approach, creating an immersive space where we bring art to life through high quality images, videos and in-depth essays by our specialists.

With this robust online support, Christie's will print fewer catalogues to ensure that we achieve our goal of **Net Zero by 2030**. However, when we do print, we will uphold the highest sustainable standards.



Please scan for more information about our sustainability goals and projects.

CHRISTIE'S

The catalogue you are reading is:



printed on fully recycled paper;



printed with vegetable-based ink and biodegradable laminates;



printed in close proximity to our markets in an effort to reduce distribution emissions.



DRIVING AMBITIOUS CORPORATE CLIMATE ACTION

bid. We may also suggest other handlers, packers, transporters or experts if you ask us to do so. For more information, please contact Christie's Art Transport on +41 (0)22 319 1717. See the information set out at www.christies.com/shipping or contact us at shippinggeneva@christies.com. We will take reasonable care when we are handling, packing, transporting and shipping a lot. However, if we recommend another company for any of these purposes, we are not responsible for their acts, failure to act or neglect.

2 EXPORT AND IMPORT

Any lot sold at auction may be affected by laws on exports from the country in which it is sold and the import restrictions of other countries. Many countries require a declaration of export for property leaving the country and/or an import declaration on entry of property into the country. Local laws may prevent you from importing a lot or may prevent you selling a lot in the country you import it into. We will not be obliged to cancel your purchase and refund the purchase price if your lot may not be exported, imported or it is seized for any reason by a government authority. It is your responsibility to determine and satisfy the requirements of any applicable laws or regulations relating to the export or import of any lot you purchase.

(a) You alone are responsible for getting advice about and meeting the requirements of any laws or regulations which apply to exporting or importing any lot prior to bidding. If you are refused a licence or there is a delay in getting one, you must still pay us in full for the lot. We may be able to help you apply for the appropriate licences if you ask us to and pay our fee for doing so. However, we cannot guarantee that you will get one. For more information, please contact Christie's Art Transport Department on +41 (0)22 319 1717. See the information set out at www.christies.com/shipping or contact us at shippinggeneva@christies.com.

(b) You alone are responsible for any applicable taxes, tariffs or other government-imposed charges relating to the export or import of the lot. If Christie's exports or imports the lot on your behalf, and if Christie's pays these applicable taxes, tariffs or other government-imposed charges, you agree to refund that amount to Christie's.

(c) Lots made of protected species

Lots made of or including (regardless of the percentage) endangered and other protected species of wildlife are marked with the symbol ~ in the catalogue. This material includes, among other things, ivory, tortoiseshell, crocodile skin, rhinoceros horn, walrusbone certain species of coral, and Brazilian rosewood. You should check the relevant customs laws and regulations before bidding on any lot containing wildlife material if you plan to export the lot from the country in which the lot is sold and import it into another country as a licence may be required. In some cases, the lot can only be shipped with an independent scientific confirmation of species and/or age, and you will need to obtain these at your own cost. Several countries have imposed restrictions on dealing in elephant ivory, ranging from a total ban on importing African elephant ivory in the United States to importing, exporting and selling under strict measures in other countries. The UK and EU have both implemented regulations on selling, exporting and importing elephant ivory. Handbags containing endangered or protected species material are marked with the symbol = and further information can be found in paragraph H2(g) below. We will not be obliged to cancel your purchase and refund the purchase price if your lot may not be exported, imported or it is seized for any reason by a government authority. It is your responsibility to determine and satisfy the requirements of any applicable laws or regulations relating to the export or import of property containing such protected or regulated material.

(d) Lots of Iranian origin
Some countries prohibit or restrict the purchase and/or import of Iranian-origin "works of conventional craftsmanship" (works that are not by a recognized artist and/or that have a function, for example: carpets, bowls, ewers, tiles, ornamental boxes). For example, the USA prohibits the import of this type of property and its purchase by US persons (wherever located). Other countries, such as Canada, only permit the import of this property in certain circumstances. As a convenience to buyers, Christie's indicates under the title of a lot if the lot originates from Iran (Persia). It is your responsibility to ensure you do not bid on or import a lot in contravention of the sanctions or trade embargoes that apply to you.

(e) Gold
Gold of less than 18ct does not qualify in all countries as 'gold' and may be refused import into those countries as 'gold'.

(f) Watches
Many of the watches offered for sale in this catalogue are pictured with straps made of endangered or protected animal materials such as alligator or crocodile. These lots are marked with the symbol ll in the catalogue. These endangered species straps are shown for display purposes only and are not for sale. Christie's will remove and retain the strap prior to shipment from the sale site.

(g) Handbags
A lot marked with the symbol = next to the lot number includes endangered or protected species material and is subject to CITES regulations. This lot may only be shipped to an address within the country of the sale site or personally picked up from our saleroom. The term "hardware" refers to the metallic parts of the handbag, such as the buckle hardware, base studs, lock and keys and/or strap, which are plated with a coloured finish (e.g. gold, silver, palladium). The terms "Gold Hardware", "Silver Hardware", "Palladium Hardware", etc. refer to the tone or colour of the hardware and not the actual material used. If the handbag incorporates solid metal hardware, this will be referenced in the catalogue description.

For all symbols and other markings referred to in paragraph H2, please note that lots are marked as a convenience to you, but we do not accept liability for errors or for failing to mark lots.

I OUR LIABILITY TO YOU

(a) We give no warranty in relation to any statement made, or information given, by us or our representatives or employees, about any lot other than as set out in the authenticity warranty and, as far as we are allowed by law, all warranties and other terms which may be added to this agreement by law are excluded. The seller's warranties contained in paragraph E1 are their own and we do not have any liability to you in relation to those warranties.

(b) (i) We are not responsible to you for any reason (whether for breaking this agreement or any other matter relating to your purchase of, or bid for, any lot) other than in the event of fraud or fraudulent misrepresentation by us or other than as expressly set out in these conditions of sale; or (ii) we do not give any representation, warranty or guarantee or assume any liability of any kind in respect of any lot with regard to merchantability, fitness for a particular purpose, description, size, quality, condition, attribution, authenticity, rarity, importance, medium, provenance, exhibition history, literature, or historical relevance. Except as required by local law, any warranty of any kind is excluded by this paragraph.

(c) In particular, please be aware that our written and telephone

bidding services, Christie's LIVE™, condition reports, currency converter and saleroom video screens are free services and we are not responsible to you for any error (human or otherwise), omission or breakdown in these services.

(d) We have no responsibility to any person other than a buyer in connection with the purchase of any lot.

(e) If, in spite of the terms in paragraphs (a) to (d) or E2(i) above, we are found to be liable to you for any reason, we shall not have to pay more than the purchase price paid by you to us. We will not be responsible to you for any reason for loss of profits or business, loss of opportunity or value, expected savings or interest, costs, damages, or expenses.

J OTHER TERMS

1 OUR ABILITY TO CANCEL

In addition to the other rights of cancellation contained in this agreement, we can cancel a sale of a lot if:

(a) any of your warranties in paragraph E3 are not correct;

(b) we reasonably believe that completing the transaction is or may be unlawful; or

(c) we reasonably believe that the sale places us or the seller under any liability to anyone else or may damage our reputation.

2 RECORDINGS

We may videotape and record proceedings at any auction. We will keep any personal information confidential, except to the extent disclosure is required by law. However, we may, through this process, use or share these recordings with another Christie's Group company and marketing partners to analyse our customers and to help us to tailor our services for buyers. If you do not want to be videotaped, you may make arrangements to make a telephone or written bid or bid on Christie's LIVE™ instead. Unless we agree otherwise in writing, you may not videotape or record proceedings at any auction.

5 COPYRIGHT

We own the copyright in all images, illustrations and written material produced by or for us relating to a lot (including the contents of our catalogues unless otherwise noted in the catalogue). You cannot use them without our prior written permission. We do not offer any guarantee that you will gain any copyright or other reproduction rights to the lot.

4 ENFORCING THIS AGREEMENT

If a court finds that any part of this agreement is not valid or is illegal or impossible to enforce, that part of the agreement will be treated as being deleted and the rest of this agreement will not be affected.

5 TRANSFERRING YOUR RIGHTS AND RESPONSIBILITIES

You may not grant a security over or transfer your rights or responsibilities under these terms on the contract of sale with the buyer unless we have given our written permission. This agreement will be binding on your successors or estate and anyone who takes over your rights and responsibilities.

6 TRANSLATIONS

If we have provided a translation of this agreement, we will use this original version in deciding any issues or disputes which arise under this agreement.

7 PERSONAL INFORMATION

We will hold and process your personal information and may pass it to another Christie's Group company for use as described in, and in line with, our privacy notice at www.christies.com/about-us/contact/privacy and if you are a resident of California you can see a copy of our California Consumer Privacy Act statement at <https://www.christies.com/about-us/contact/ccpa>.

8 WAIVER

No failure or delay to exercise any right or remedy provided under these Conditions of Sale shall constitute a waiver of that or any other right or remedy, nor shall it prevent or restrict the further exercise of that or any other right or remedy. No single or partial exercise of such right or remedy shall prevent or restrict the further exercise of that or any other right or remedy.

9 LAW AND DISPUTES

This agreement, and any contractual or non-contractual dispute arising out of or in connection with this agreement, will be governed by Swiss law, excluding the Convention on Contracts for the International Sale of Goods. Before either you or we start any court proceedings and if you and we agree, you and we will try to settle the dispute by mediation in accordance with the Swiss Rules of Mediation of the Swiss Chambers' Arbitration Institution. If the dispute is not settled by mediation, you agree for our benefit that the dispute will be referred to and dealt with exclusively in the cantonal courts located in Christie's place of business, subject to any appeal to the Swiss Federal Supreme Court; however, we will have the right to bring proceedings against you in any other court.

10 REPORTING ON WWW.CHRISTIES.COM

Details of all lots sold by us, including catalogue descriptions and prices, may be reported on www.christies.com. Sales totals are hammer price plus buyer's premium and do not reflect costs, financing fees, or application of buyer's or seller's credits. We regret that we cannot agree to requests to remove these details from www.christies.com.

K GLOSSARY

auctioneer: the individual auctioneer and/or Christie's.

authentic: a genuine example, rather than a copy or forgery of:

(i) the work of a particular artist, author or manufacturer, if the lot is described in the Heading as the work of that artist, author or manufacturer;

(ii) a work created within a particular period or culture, if the lot is described in the Heading as a work created during that period or culture;

(iii) a work for a particular origin source if the lot is described in the Heading as being of that origin or source; or

(iv) in the case of gems, a work which is made of a particular material, if the lot is described in the Heading as being made of that material.

authenticity warranty: the guarantee we give in this agreement that a lot is authentic as set out in section E2 of this agreement.

buyer's premium: the charge the buyer pays us along with the hammer price.

catalogue description: the description of a lot in the catalogue for the auction, as amended by any saleroom notice.

Christie's Group: Christie's International Plc, its subsidiaries and other companies within its corporate group.

condition: the physical condition of a lot.

due date: has the meaning given to it paragraph F1(a).

estimate: the price range included in the catalogue or any saleroom notice within which we believe a lot may sell. Low estimate means the lower figure in the range and high estimate means the higher figure. The mid estimate is the midpoint between the two.

hammer price: the amount of the highest bid the auctioneer accepts for the sale of a lot.

Heading: has the meaning given to it in paragraph E2.

lot: an item to be offered at auction (or two or more items to be offered at auction as a group).

other damages: any special, consequential, incidental or indirect damages of any kind or any damages which fall within the meaning of 'special', 'incidental' or 'consequential' under local law.

purchase price: has the meaning given to it in paragraph F1(a).

provenance: the ownership history of a lot.

qualified: has the meaning given to it in paragraph E2 and **Qualified Headings** means the section headed **Qualified Headings** on the page of the catalogue headed 'Important Notices and Explanation of Cataloguing Practice'.

reserve: the confidential amount below which we will not sell a lot.

saleroom notice : a written notice posted next to the lot in the saleroom and on www.christies.com, which is also read to prospective telephone bidders and notified to clients who have left commission bids, or an announcement made by the auctioneer either at the beginning of the sale, or before a particular lot is auctioned.

UPPER CASE type: means having all capital letters.

warranty: a statement or representation in which the person making it guarantees that the facts set out in it are correct.

SYMBOLS USED IN THIS CATALOGUE

The meaning of words coloured in bold in this section can be found in paragraph K, Glossary, of the section of the catalogue headed 'Conditions of Sale'.

◦ Christie's has a direct financial interest in the lot. See Important Notices and Explanation of Cataloguing Practice in the Conditions of Sale for further information.

◊ Christie's has provided a minimum price guarantee and has a direct financial interest in this lot. Christie's has financed all or a part of such interest through a third party. Such third parties generally benefit financially if a guaranteed lot is sold. See the Important Notices and Explanation of Cataloguing Practice in the Conditions of Sale for further information.

△ Christie's has a financial interest in the lot. See Important Notices and Explanation of Cataloguing Practice in the Conditions of Sale for further information.

△◆ Christie's has a financial interest in this lot and has financed all or a part of such interest through a third party. Such third parties generally benefit financially if a guaranteed lot is sold. See the Important Notices and Explanation of Cataloguing Practice in the Conditions of Sale for further information

▣ A party with a direct or indirect interest in the lot who may have knowledge of the lot's reserve or other material information may be bidding on the lot.

λ Artist's Resale Right. See Section D3 of the Conditions of Sale for further information.

• Lot offered without reserve.

~ Lot incorporates material from endangered species which could result in export restrictions. See Section H2(c) of the Conditions of Sale for further information.

= Handbag lot incorporates material from endangered species. International shipping restrictions apply. See paragraph H2 of the Conditions of Sale for further information.

ψ Lot incorporates material from endangered species which is shown for display purposes only and is not for sale. See Section H2(g) of the Conditions of Sale for further information.

+ See VAT Symbols and Explanation in the Conditions of Sale for further information.

Please note that lots are marked as a convenience to you and we shall not be liable for any errors in, or failure to, mark a lot.

VAT SYMBOLS AND EXPLANATION

You can find a glossary explaining the meanings of words coloured in bold on this page at the end of the section of the catalogue headed 'Conditions of Sale'

VAT payable

Symbol	
No Symbol	No VAT will be charged on the hammer price. VAT at 8.1% will be charged on the buyer's premium.
+	VAT will be charged at 8.1% on both the hammer price and buyer's premium.

VAT Exemptions/Refunds on Export

- If you appoint Christie's Art Transport or one of our authorised shippers to arrange your export/shipping out of the Swiss customs territory (being Switzerland and the principality of Liechtenstein), we will issue you with an export invoice exempt from Swiss VAT. If you later cancel or change the shipment we will issue a revised invoice charging you all applicable tax charges.
- If you wish to arrange your own export of your purchased lots out of the Swiss Customs territory either:
 - using your own shipper or by hand carrying your purchase out of the Swiss customs territory; or
 - if you request us to deliver your purchase to a Freeport in Switzerland (for non-Swiss resident buyers only);

then you must pay all applicable Swiss VAT charges in full, before we release or deliver the lots to you or your authorised agents.

3. Please note that Christie's is only able to issue refunds of the applicable Swiss VAT charged in the circumstances outlined in paragraph 2 above, if we receive the following:

- satisfactory evidence of a definitive export of the purchased lots out of the Swiss customs territory (e.g. a customs stamped Swiss export assessment) demonstrating a correct export of the purchased lots within (i) three months of the date of the auction for direct exports (not via the Freeport); or (ii) six months from the date of the auction for exports via the Freeport; and

b) your written confirmation that you have not used the lot in Switzerland prior to its export.

Please note any exports completed outside of the permitted timeframe as enlisted in point 3a above cannot receive a VAT refund. All applicable Taxes charges on the sales invoice are payable and due to the Swiss Tax authorities.

4. If you have any questions about VAT please contact the Post-Sale Services Department on +41 22 319 1780 or PostSaleSwiss@christies.com.

IMPORTANT NOTICES

CHRISTIE'S INTEREST IN PROPERTY CONSIGNED FOR AUCTION

Δ Property in which Christie's has an ownership or financial interest

From time to time, Christie's may offer a **lot** in which Christie's has an ownership interest or a financial interest. Such **lot** is identified in the catalogue with the symbol Δ next to its **lot** number. Where Christie's has an ownership or financial interest in every **lot** in the catalogue, Christie's will not designate each **lot** with a symbol, but will state its interest in the front of the catalogue.

◊ Minimum Price Guarantees

On occasion, Christie's has a direct financial interest in the outcome of the sale of certain **lots** consigned for sale. This will usually be where it has guaranteed to the Seller that whatever the outcome of the auction, the Seller will receive a minimum sale price for the **lot**. This is known as a minimum price guarantee. Where Christie's holds such financial interest, we identify such **lots** with the symbol ◊ next to the **lot** number.

◊ Third Party Guarantees/Irrevocable bids

Where Christie's has provided a Minimum Price Guarantee, it is at risk of making a loss, which can be significant if the **lot** fails to sell. Christie's therefore sometimes chooses to share that risk with a third party who agrees, prior to the auction, to place an irrevocable written bid on the **lot**. If there are no other higher bids, the third party commits to buy the **lot** at the level of their irrevocable written bid. In doing so, the third party takes on all or part of the risk of the **lot** not being sold. **Lots** which are subject to a third party guarantee arrangement are identified in the catalogue with the symbol ◊.

In most cases, Christie's compensates the third party in exchange for accepting this risk. Where the third party is the successful bidder, the third party's remuneration is based on a fixed financing fee. If the third party is not the successful bidder, the remuneration may either be based on a fixed fee or an amount calculated against the final hammer price. The third party may also bid for the **lot** above the irrevocable written bid.

Third party guarantors are required by us to disclose to anyone they are advising their financial interest in any **lots** they are guaranteeing. However, for the avoidance of any doubt, if you are advised by or bidding through an agent on a **lot** identified as being subject to a third party guarantee you should always ask your agent to confirm whether or not he or she has a financial interest in relation to the **lot**.

Δ Property in which Christie's has an interest and Third Party Guarantee/Irrevocable bid

Where Christie's has a financial interest in a **lot** and the **lot** fails to sell, Christie's is at risk of making a loss. As such, Christie's may choose to share that risk with a third party whereby the third party contractually agrees, prior to the auction, to place an irrevocable written bid on the **lot**. Such **lot** is identified with the symbol Δ next to the **lot** number.

Where the third party is the successful bidder on the **lot**, he or she will not receive compensation in exchange for accepting this risk. If the third party is not the successful bidder, Christie's may compensate the third party. The third party is required by us to disclose to anyone he or she is advising of his or her financial interest in any **lot** in which Christie's has a financial interest. If you are advised by or bidding through an agent on a **lot** in which Christie's has a financial interest that is subject to a contractual written bid, you should always ask your agent to confirm whether or not he or she has a financial interest in relation to the **lot**.

▫ Bidding by parties with an interest

When a party with a direct or indirect interest in the **lot** who may have knowledge of the **lot's** **reserve** or other material information may be bidding on the **lot**, we will mark the **lot** with this symbol ▫. This interest can include beneficiaries of an estate that consigned the **lot** or a joint owner of a **lot**. Any interested party that successfully bids on a **lot** must comply with Christie's Conditions of Sale, including paying the **lot's** full **buyer's** premium plus applicable taxes.

Post-catalogue notifications

If Christie's enters into an arrangement or becomes aware of bidding that would have required a catalogue symbol, we will notify you by updating christies.com with the relevant

information (time permitting) or otherwise by a pre-sale or pre-**lot** announcement.

Other Arrangements

Christie's may enter into other arrangements not involving bids. These include arrangements where Christie's has advanced money to consignors or prospective purchasers or where Christie's has shared the risk of a guarantee with a partner without the partner being required to place an irrevocable written bid or otherwise participating in the bidding on the **lot**. Because such arrangements are unrelated to the bidding process they are not marked with a symbol in the catalogue. Please see <http://www.christies.com/financial-interest/> for a more detailed explanation of minimum price guarantees and third party financing arrangements.

EXPLANATION OF CATALOGUING PRACTICE

Terms used in this catalogue have the meanings ascribed to them below. Please note that all statements in a catalogue or lot description as to authorship are made subject to the provisions of the Conditions of Sale, including the authenticity warranty. Our use of these expressions does not take account of the condition of the lot or of the extent of any restoration. Written condition reports are usually available on request.

A term and its definition listed under 'Qualified Headings' is a qualified statement as to authorship. While the use of this term is based upon careful study and represents the opinion of specialists, Christie's and the consignor assume no risk, liability and responsibility for the authenticity of authorship of any lot in this catalogue described by this term, and the authenticity warranty shall not be available with respect to **lots** described using this term.

PICTURES, DRAWINGS, PRINTS, MINIATURES AND SCULPTURE

Name(s) or Recognised Designation of an artist without any qualification: in Christie's opinion a work by the artist.

QUALIFIED HEADINGS

"Attributed to...": in Christie's qualified opinion probably a work by the artist in whole or in part.

"Studio of ..."/"Workshop of ...": in Christie's qualified opinion a work executed in the studio or workshop of the artist, possibly under his supervision.

"Circle of ...": in Christie's qualified opinion a work of the period of the artist and showing his influence.

"Follower of ...": in Christie's qualified opinion a work executed in the artist's style but not necessarily by a pupil.

"Manner of ...": in Christie's qualified opinion a work executed in the artist's style but of a later date.

"After ...": in Christie's qualified opinion a copy (of any date) of a work of the artist.

"Signed ..."/"Dated ..."/ "Inscribed ...": in Christie's qualified opinion the work has been signed/dated/inscribed by the artist.

"With signature ..."/"With date ..."/ "With inscription ...": in Christie's qualified opinion the signature/ date/ inscription appears to be by a hand other than that of the artist.

The date given for Old Master, Modern and Contemporary Prints is the date (or approximate date when prefixed with 'circa') on which the matrix was worked and not necessarily the date when the impression was printed or published.

REGARDING WEIGHTS AND MEASUREMENTS

Please note that weights and measurements in the catalogue should be considered as approximate. These figures are to be used as guidelines and should not be relied upon as exact.

JEWELLERY

"Boucheron": when maker's name appears in the title, in Christie's opinion it is by that maker.

"Mounted by Boucheron": in Christie's opinion the setting has

been created by the jeweller using stones originally supplied by the jeweller's client.

QUALIFIED HEADINGS

"Attributed to": in Christie's **qualified** opinion is probably a work by the jeweller/maker but no warranty is provided that the **lot** is the work of the named jeweller/maker.

Other information included in the catalogue description

"Signed Boucheron / Signature Boucheron": in Christie's opinion has a signature by the jeweller.

"With maker's mark for Boucheron": in Christie's opinion has a mark denoting the maker.

Periods

Art Nouveau 1895-1910

Belle Epoque 1895-1914

Art Deco 1915-1935

Retro 1940s

FABERGÉ

QUALIFIED HEADINGS

"Marked Fabergé, Workmaster ...": in Christie's qualified opinion a work of the master's workshop inscribed with his name or initials and his workmaster's initials.

"By Fabergé ...": in Christie's qualified opinion, a work of the master's workshop, but without his mark.

"In the style of ...": in Christie's qualified opinion a work of the period of the master and closely related to his style.

"Bearing marks ...": in Christie's qualified opinion not a work of the master's workshop and bearing later marks.

WATCHES

Authenticity Certificates

As certain manufacturers may not issue certificates of authenticity, Christie's has no obligation to furnish a buyer with a certificate of authenticity from the manufacturer, except where specifically noted in the catalogue. Unless Christie's is satisfied that it should cancel the sale in accordance with the authenticity warranty, the failure of a manufacturer to issue a certificate will not constitute grounds for cancellation of the sale.

Removal of Watch Batteries

A **lot** marked with the symbol Ⓢ next to the **lot** number incorporates batteries which may be designated as "dangerous goods" under international laws and regulations governing the transport of goods by air freight. If a buyer requests shipment of the **lot** to a destination outside of the country in which the saleroom is located, the batteries will be removed and retained by us prior to shipment. If the **lot** is collected from the saleroom, the batteries will be made available for collection free of charge.

CULTURAL PROPERTY

Certain **lots** consigned to us for sale are subject to the Swiss Federal Law on the international transfer of Cultural Property. This law contains rules governing the export of Cultural Property as defined by the UNESCO Convention of 14 November 1970, which sets out the measures to be taken in order to prevent the illicit import, export and trading of Cultural Property. Pursuant to this law, the export of such Cultural Property from Switzerland must be declared and prior authorisation may also be required. Please contact us if you require any further information.

COLLECTION TIMES

Items can be collected at Christie's Geneva, 12 rue du Mont Blanc, 1201 Geneva from Thursday 16 May.

CHRISTIE'S



Jewels Online: The London Edit

London | 24 May-5 June 2024

VIEWING

29 May-4 June 2024
8 King Street
London

Henry Bailey
hbailey@christies.com
+44 (0)20 7389 2382

GRAFF COLOURED DIAMOND AND DIAMOND RING
GIA, 2024: 1.09 carat Fancy Vivid Purplish Pink, VS2
£250,000-450,000

IDENTITY VERIFICATION

From January 2020, new anti-money laundering regulations require Christie's and other art businesses to verify the identity of all clients. To register as a new client, you will need to provide the following documents, or if you are an existing client, you will be prompted to provide any outstanding documents the next time you transact.

Private individuals:

- A copy of your passport or other government-issued photo ID
- Proof of your residential address (such as a bank statement or utility bill) dated within the last three months

Please upload your documents through your christies.com account: click 'My Account' followed by 'Complete Profile'. You can also email your documents to info@christies.com or provide them in person.

Organisations:

- Formal documents showing the company's incorporation, its registered office and business address, and its officers, members and ultimate beneficial owners
- A passport or other government-issued photo ID for each authorised user

Please email your documents to info@christies.com or provide them in person.



Joallerie Paris

Online Sale | 12-21 June 2024

VIEWING
15-21 June 2024
9, avenue Matignon
75008 Paris

Violaine d'Astorg
vdastorg@christies.com
+33 (0)1 40 76 85 81

CARTIER
RARE ART DÉCO EMERALD, ONYX,
ENAMEL AND DIAMOND SAUTOIR
€150,000-200,000

CHRISTIE'S



VAN CLEEF & ARPELS RUBY AND
DIAMOND 'MYSTERY-SET' BROOCH

ESTIMATE: \$300,000 - \$500,000
PRICE REALIZED: \$642,600

MAGNIFICENT JEWELS
NEW YORK
June 7 2023

Other fees apply in addition to the hammer price.
See Section D of our Conditions of Sale at the back of the
Auction Catalogue

Invitation to Consign

Christie's is now inviting consignments to our upcoming jewellery auctions. With nearly three decades as the market leader for jewellery, we continue to set records in our sale rooms around the world. Please do not hesitate to contact us for a complimentary and confidential valuation.

Rahul Kadakia
usjewels@christies.com
+1 212 636 2300

[christies.com](https://www.christies.com)



Rare Watches Including the Property of Michael Schumacher

Geneva | 13 May 2024

VIEWING
Highlight view from 10-12 May 2024

Remi Guillemin
rguillemin@christies.com
+41 (0)22 319 1797

RICHARD MILLE

AN EXTRAORDINARY CARBON TPT®, TITANIUM AND
18K RED GOLD SKELETONIZED LIMITED EDITION FLYING
TOURBILLON WRISTWATCH WITH A RED GOLD HAND
HOLDING UP THE DEVIL'S HORN SIGN

CHF800,000-1,600,000

CHRISTIE'S

CHRISTIE'S

ART FINANCE

**CHRISTIE'S WOULD BE HONOURED
TO PARTNER WITH YOU TO
ACHIEVE YOUR FINANCIAL GOALS.**

FLEXIBILITY

Access loans from US\$1 million up to US\$150 million at competitive interest rates, structured around your financial goals.

DISCRETION AND SPEED

Receive funds within 2-3 weeks once initial terms are agreed, with no personal financial information required.

DIVERSE CATEGORIES

Leverage a wide range of fine art and luxury goods as collateral.

EXPERTISE

Benefit from Christie's deep understanding of the art market and our unparalleled global network of specialists.

EASE

Save time and money with our seamless end-to-end service, from in-house valuations to facilitating loans to museum exhibitions.

YOUR CHRISTIE'S ART FINANCE TEAM



Sayuri Ganepola
Global Managing Director
sganepola@christies.com
+1 212 636 2648



Shaun Desiderio
Vice President
Regional Portfolio Manager,
Americas
sdesiderio@christies.com
+1 212 641 3612



FAQs
SCAN TO
FIND OUT
MORE



CHRISTIE'S

